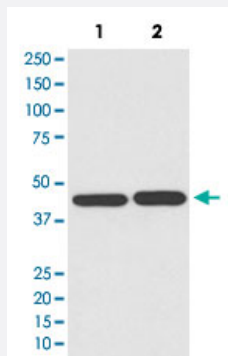


TIA1 monoclonal antibody, clone AAHD-20

Catalog # MAB20784 Size 100 uL

Applications



Western Blot (Cell lysate)

Western Blot analysis of Lane 1: Jurkat and Lane 2: NIH/3T3 cell lysates with TIA1 monoclonal antibody, clone AAHD-20 (Cat # MAB20784).

Specification

Product Description Rabbit monoclonal antibody raised against synthetic peptide of human TIA1.

Immunogen A synthetic peptide corresponding to human TIA1.

Host Rabbit

Theoretical MW (kDa) 42.963

Reactivity Human

Form Liquid

Purification Affinity purification

Isotype IgG

Recommend Usage

- Immunocytochemistry (1:50-1:200)
- Immunofluorescence (1:50-1:200)
- Immunohistochemistry (1:50-1:200)
- Immunoprecipitation (1:50)
- Western Blot (1:500-1:2000)
- The optimal working dilution should be determined by the end user.

Storage Buffer	In PBS, 150 mM NaCl, pH 7.4 (50% glycerol, 0.02% sodium azide).
Storage Instruction	Store at -20°C for one year. After reconstitution, at 4°C for one month. It can also be aliquotted and stored frozen at -20°C for a longer time. Avoid repeated freezing and thawing.
Note	This product contains sodium azide: a POISONOUS AND HAZARDOUS SUBSTANCE which should be handled by trained staff only.

Applications

- Western Blot (Cell lysate)

Western Blot analysis of Lane 1: Jurkat and Lane 2: NIH/3T3 cell lysates with TIA1 monoclonal antibody, clone AAHD-20 (Cat # MAB20784).

- Immunohistochemistry

- Immunocytochemistry

- Immunofluorescence

- Immunoprecipitation

Gene Info — TIA1

Entrez GeneID	7072
Protein Accession#	P31483
Gene Name	TIA1
Gene Alias	-
Gene Description	TIA1 cytotoxic granule-associated RNA binding protein
Omim ID	603518
Gene Ontology	Hyperlink

Gene Summary

The product encoded by this gene is a member of a RNA-binding protein family and possesses nucleolytic activity against cytotoxic lymphocyte (CTL) target cells. It has been suggested that this protein may be involved in the induction of apoptosis as it preferentially recognizes poly(A) homopolymers and induces DNA fragmentation in CTL targets. The major granule-associated species is a 15-kDa protein that is thought to be derived from the carboxyl terminus of the 40-kDa product by proteolytic processing. Alternative splicing resulting in different isoforms of this gene product has been described in the literature. [provided by RefSeq]

Other Designations

T-cell-restricted intracellular antigen-1|TIA1 cytotoxic granule-associated RNA-binding protein|TIA1 protein|cytotoxic granule-associated RNA-binding protein|nucleolysin TIA-1 isoform p40|p40-TIA-1 (containing p15-TIA-1)