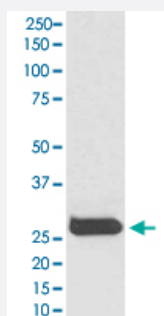


THY1 monoclonal antibody, clone AOFC-20

Catalog # MAB20782 Size 100 uL

Applications



Western Blot (Tissue lysate)

Western Blot analysis of human fetal brain tissue lysate with THY1 monoclonal antibody, clone AOFC-20 (Cat # MAB20782).

Specification

Product Description Rabbit monoclonal antibody raised against synthetic peptide of human THY1.

Immunogen A synthetic peptide corresponding to human THY1.

Host Rabbit

Theoretical MW (kDa) 17.935

Reactivity Human

Form Liquid

Purification Affinity purification

Isotype IgG

Recommend Usage

- Immunocytochemistry (1:50-1:200)
- Immunofluorescence (1:50-1:200)
- Immunohistochemistry (1:50-1:200)
- Western Blot (1:500-1:2000)
- The optimal working dilution should be determined by the end user.

Storage Buffer In PBS, 150 mM NaCl, pH 7.4 (50% glycerol, 0.02% sodium azide).

Storage Instruction

Store at -20°C for one year. After reconstitution, at 4°C for one month. It can also be aliquotted and stored frozen at -20°C for a longer time. Avoid repeated freezing and thawing.

Note

This product contains sodium azide: a POISONOUS AND HAZARDOUS SUBSTANCE which should be handled by trained staff only.

Applications

- Western Blot (Tissue lysate)

Western Blot analysis of human fetal brain tissue lysate with THY1 monoclonal antibody, clone AOFC-20 (Cat # MAB20782).

- Immunohistochemistry

- Immunocytochemistry

- Immunofluorescence

Gene Info — THY1

Entrez GeneID[7070](#)**Protein Accession#**[P04216](#)**Gene Name**

THY1

Gene Alias

CD90, FLJ33325

Gene Description

Thy-1 cell surface antigen

Omim ID[188230](#)**Gene Ontology**[Hyperlink](#)**Other Designations**

Thy-1 T-cell antigen|Thy-1 membrane glycoprotein

Pathway

- [Leukocyte transendothelial migration](#)

Disease

- [Celiac Disease](#)
- [Genetic Predisposition to Disease](#)