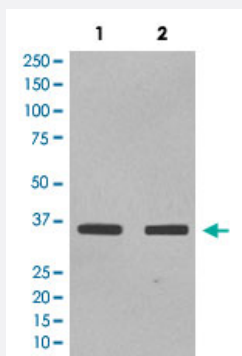


SOX2 monoclonal antibody, clone BIO-19

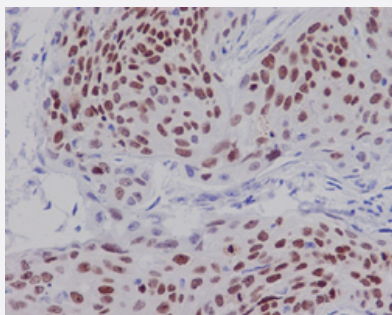
Catalog # MAB20737 Size 100 uL

Applications



Western Blot (Cell lysate)

Western Blot analysis of Lane 1: NCCIT and Lane 2: F9 cell lysates with SOX2 monoclonal antibody, clone BIO-19 (Cat # MAB20737).



Immunohistochemistry (Formalin/PFA-fixed paraffin-embedded sections)

Immunohistochemical staining (Formalin-fixed paraffin-embedded sections) of human cervix carcinoma with SOX2 monoclonal antibody, clone BIO-19 (Cat # MAB20737).

Specification

Product Description	Rabbit monoclonal antibody raised against synthetic peptide of human SOX2.
Immunogen	A synthetic peptide corresponding to human SOX2.
Host	Rabbit
Theoretical MW (kDa)	34.31
Reactivity	Human
Form	Liquid

Purification	Affinity purification
Isotype	IgG
Recommend Usage	Immunocytochemistry (1:50-1:200) Immunofluorescence (1:50-1:200) Immunohistochemistry (Formalin/PFA-fixed paraffin-embedded sections) (1:50-1:200) Western Blot (1:1000-1:2000) The optimal working dilution should be determined by the end user.
Storage Buffer	In PBS, 150 mM NaCl, pH 7.4 (50% glycerol, 0.02% sodium azide).
Storage Instruction	Store at -20°C for one year. After reconstitution, at 4°C for one month. It can also be aliquotted and stored frozen at -20°C for a longer time. Avoid repeated freezing and thawing.
Note	This product contains sodium azide: a POISONOUS AND HAZARDOUS SUBSTANCE which should be handled by trained staff only.

Applications

- Western Blot (Cell lysate)

Western Blot analysis of Lane 1: NCCIT and Lane 2: F9 cell lysates with SOX2 monoclonal antibody, clone BIO-19 (Cat # MAB20737).

- Immunohistochemistry (Formalin/PFA-fixed paraffin-embedded sections)

Immunohistochemical staining (Formalin-fixed paraffin-embedded sections) of human cervix carcinoma with SOX2 monoclonal antibody, clone BIO-19 (Cat # MAB20737).

- Immunocytochemistry

- Immunofluorescence

Gene Info — SOX2

Entrez GeneID	6657
Protein Accession#	P48431
Gene Name	SOX2
Gene Alias	ANOP3, MCOPS3, MGC2413
Gene Description	SRY (sex determining region Y)-box 2

Omim ID [184429 206900](#)

Gene Ontology [Hyperlink](#)

Gene Summary

This intronless gene encodes a member of the SRY-related HMG-box (SOX) family of transcription factors involved in the regulation of embryonic development and in the determination of cell fate. The product of this gene is required for stem-cell maintenance in the central nervous system, and also regulates gene expression in the stomach. Mutations in this gene have been associated with optic nerve hypoplasia and with syndromic microphthalmia, a severe form of structural eye malformation. This gene lies within an intron of another gene called SOX2 overlapping transcript (SOX2 OT). [provided by RefSeq]

Other Designations SRY-related HMG-box gene 2|sex-determining region Y-box 2|transcription factor SOX2

Disease

- [Anophthalmos](#)
- [Coloboma](#)
- [Diabetes Mellitus](#)
- [Diabetic Nephropathies](#)
- [Genetic Predisposition to Disease](#)
- [Kidney Failure](#)
- [Microphthalmos](#)
- [Myopia](#)