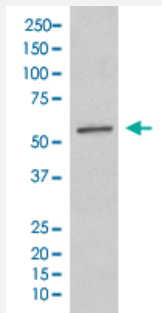


SGK1 monoclonal antibody, clone EHF-19

Catalog # MAB20705 Size 100 uL

Applications



Western Blot (Cell lysate)

Western Blot analysis of A431 cell lysate with SGK1 monoclonal antibody, clone EHF-19 (Cat # MAB20705).

Specification

Product Description Rabbit monoclonal antibody raised against synthetic peptide of human SGK1.

Immunogen A synthetic peptide corresponding to human SGK1.

Host Rabbit

Theoretical MW (kDa) 48.942

Reactivity Human

Form Liquid

Purification Affinity purification

Isotype IgG

Recommend Usage

- Flow Cytometry (1:30)
- Immunohistochemistry (1:50-1:200)
- Immunoprecipitation (1:50)
- Western Blot (1:500-1:1000)
- The optimal working dilution should be determined by the end user.

Storage Buffer In PBS, 150 mM NaCl, pH 7.4 (50% glycerol, 0.02% sodium azide).

Storage Instruction

Store at -20°C for one year. After reconstitution, at 4°C for one month. It can also be aliquotted and stored frozen at -20°C for a longer time. Avoid repeated freezing and thawing.

Note

This product contains sodium azide: a POISONOUS AND HAZARDOUS SUBSTANCE which should be handled by trained staff only.

Applications

- Western Blot (Cell lysate)

Western Blot analysis of A431 cell lysate with SGK1 monoclonal antibody, clone EHF-19 (Cat # MAB20705).

- Immunohistochemistry

- Immunoprecipitation

- Flow Cytometry

Gene Info — SGK1

Entrez GeneID[6446](#)**Protein Accession#**[O00141](#)**Gene Name**

SGK1

Gene Alias

SGK

Gene Description

serum/glucocorticoid regulated kinase 1

Omim ID[602958](#)**Gene Ontology**[Hyperlink](#)**Gene Summary**

This gene encodes a serine/threonine protein kinase that plays an important role in cellular stress response. This kinase activates certain potassium, sodium, and chloride channels, suggesting an involvement in the regulation of processes such as cell survival, neuronal excitability, and renal sodium excretion. High levels of expression of this gene may contribute to conditions such as hypertension and diabetic nephropathy. Several alternatively spliced transcript variants encoding different isoforms have been noted for this gene. [provided by RefSeq]

Other Designations

OTTHUMP00000017247|serine/threonine protein kinase SGK

Disease

- [Cardiovascular Diseases](#)
- [Diabetes Mellitus](#)
- [Disease Progression](#)
- [Edema](#)
- [Genetic Predisposition to Disease](#)
- [Hyperinsulinism](#)
- [Hypertension](#)
- [Kidney Failure](#)