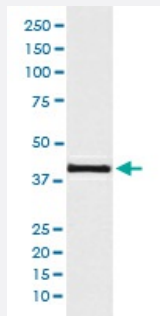


AKT1S1 monoclonal antibody, clone ABIO-1

Catalog # MAB20615 Size 100 uL

Applications



Western Blot (Cell lysate)

Western Blot analysis of 293T cell lysate using AKT1S1 monoclonal antibody, clone ABIO-1.

Specification

Product Description Rabbit monoclonal antibody raised against synthetic peptide of human AKT1S1.

Immunogen A synthetic peptide corresponding to human AKT1S1.

Host Rabbit

Reactivity Human

Form Liquid

Purification Affinity purification

Isotype IgG

Recommend Usage

- Flow Cytometry (1:50)
- Immunohistochemistry (1:50-1:200)
- Immunoprecipitation (1:50)
- Western Blot (1:500-1:2000)
- The optimal working dilution should be determined by the end user.

Storage Buffer In PBS, 150 mM NaCl, pH 7.4 (50% glycerol, 0.02% sodium azide).

Storage Instruction

Store at -20°C for one year. After reconstitution, at 4°C for one month. It can also be aliquotted and stored frozen at -20°C for a longer time. Avoid repeated freezing and thawing.

Note

This product contains sodium azide: a POISONOUS AND HAZARDOUS SUBSTANCE which should be handled by trained staff only.

Applications

- Western Blot (Cell lysate)

Western Blot analysis of 293T cell lysate using AKT1S1 monoclonal antibody, clone ABIO-1.

- Immunohistochemistry (Formalin/PFA-fixed paraffin-embedded sections)

- Immunoprecipitation

- Flow Cytometry

Gene Info — AKT1S1

Entrez GeneID[84335](#)**Protein Accession#**[Q96B36](#)**Gene Name**

AKT1S1

Gene Alias

Lobe, MGC2865, PRAS40

Gene Description

AKT1 substrate 1 (proline-rich)

Omim ID[610221](#)**Gene Ontology**[Hyperlink](#)**Gene Summary**

AKT1S1 is a proline-rich substrate of AKT (MIM 164730) that binds 14-3-3 protein (see YWHAH, MIM 113508) when phosphorylated (Kovacina et al., 2003 [PubMed 12524439]).[supplied by OMIM]

Other Designations

OTTHUMP00000196757|OTTHUMP00000196758|OTTHUMP00000196759|OTTHUMP00000196760|proline-rich Akt substrate, 40 kDa