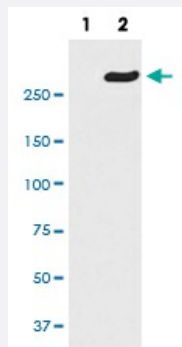


POLR2A (phospho S5) monoclonal antibody, clone ABCE-16

Catalog # MAB20556 Size 100 uL

Applications



Western Blot (Cell lysate)

Western Blot analysis of (1) HeLa cell lysate treated with Lambda Phosphatase, (2) HeLa cell lysate using POLR2A (phospho S5) monoclonal antibody, clone ABCE-16.

Specification

Product Description	Rabbit monoclonal antibody raised against synthetic phosphopeptide of human POLR2A.
Immunogen	A synthetic phosphopeptide corresponding to residues surrounding S5 of human POLR2A.
Host	Rabbit
Reactivity	Human
Form	Liquid
Purification	Affinity purification
Isotype	IgG
Recommend Usage	<p>Flow Cytometry (1:40)</p> <p>Immunocytochemistry (1:50-1:200)</p> <p>Immunofluorescence (1:50-1:200)</p> <p>Immunohistochemistry (1:50-1:200)</p> <p>Immunoprecipitation (1:20)</p> <p>Western Blot (1:500-1:2000)</p> <p>The optimal working dilution should be determined by the end user.</p>

Storage Buffer In PBS, 150 mM NaCl, pH 7.4 (50% glycerol, 0.4-0.5 mg/mL BSA, 0.02% sodium azide).

Storage Instruction

Store at -20°C for one year. After reconstitution, at 4°C for one month. It can also be aliquotted and stored frozen at -20°C for a longer time. Avoid repeated freezing and thawing.

Note

This product contains sodium azide: a POISONOUS AND HAZARDOUS SUBSTANCE which should be handled by trained staff only.

Applications

- Western Blot (Cell lysate)

Western Blot analysis of (1) HeLa cell lysate treated with Lambda Phosphatase, (2) HeLa cell lysate using POLR2A (phospho S5) monoclonal antibody, clone ABCE-16.

- Immunohistochemistry (Formalin/PFA-fixed paraffin-embedded sections)

- Immunocytochemistry

- Immunofluorescence

- Immunoprecipitation

- Flow Cytometry

Gene Info — POLR2A

Entrez GeneID [5430](#)

Protein Accession# [P24928](#)

Gene Name POLR2A

Gene Alias MGC75453, POLR2, POLRA, RPB1, RPBh1, RPO2, RPOL2, RpIIIS, hRPB220, hsRPB1

Gene Description polymerase (RNA) II (DNA directed) polypeptide A, 220kDa

Omim ID [180660](#)

Gene Ontology [Hyperlink](#)

Gene Summary

This gene encodes the largest subunit of RNA polymerase II, the polymerase responsible for synthesizing messenger RNA in eukaryotes. The product of this gene contains a carboxy terminal domain composed of heptapeptide repeats that are essential for polymerase activity. These repeats contain serine and threonine residues that are phosphorylated in actively transcribing RNA polymerase. In addition, this subunit, in combination with several other polymerase subunits, forms the DNA binding domain of the polymerase, a groove in which the DNA template is transcribed into RNA. [provided by RefSeq]

Other Designations

DNA directed RNA polymerase II polypeptide A|DNA-directed RNA polymerase II largest subunit, RNA polymerase II 220 kd subunit|polymerase (RNA) II (DNA directed) polypeptide A (220kD)

Pathway

- [Metabolic pathways](#)
- [Purine metabolism](#)
- [Pyrimidine metabolism](#)
- [RNA polymerase](#)

Disease

- [Cardiovascular Diseases](#)
- [Diabetes Mellitus](#)
- [Edema](#)
- [Urinary Bladder Neoplasms](#)