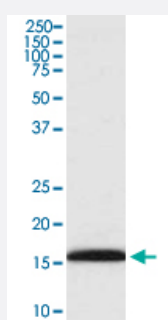


Methyl-Histone H3 (dimethyl K4) monoclonal antibody, clone AFF-8

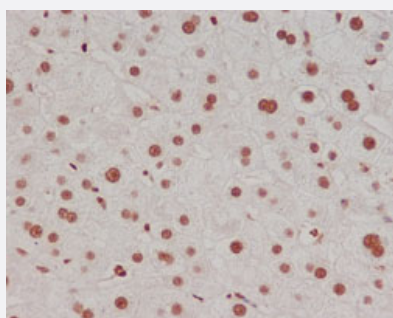
Catalog # MAB20487 Size 100 uL

Applications



Western Blot (Cell lysate)

Western Blot analysis of HeLa cell lysate with Methyl-Histone H3 (dimethyl K4) monoclonal antibody, clone AFF-8 (Cat # MAB20487).



Immunohistochemistry (Formalin/PFA-fixed paraffin-embedded sections)

Immunohistochemical staining (Formalin-fixed paraffin-embedded sections) of human liver with Methyl-Histone H3 (dimethyl K4) monoclonal antibody, clone AFF-8 (Cat # MAB20487).

Specification

Product Description	Rabbit monoclonal antibody raised against synthetic dimethyl peptide of Methyl-Histone H3 (dimethyl K4).
Immunogen	A synthetic dimethyl peptide corresponding to residues surrounding K4 of Methyl-Histone H3.
Host	Rabbit
Reactivity	Human
Form	Liquid

Purification	Affinity purification
Isotype	IgG
Recommend Usage	ChIP Flow Cytometry (1:50) Immunocytochemistry (1:50-1:200) Immunofluorescence (1:50-1:200) Immunohistochemistry (Formalin/PFA-fixed paraffin-embedded sections) (1:50-1:200) Immunoprecipitation (1:50) Western Blot (1:500-1:2000) The optimal working dilution should be determined by the end user.
Storage Buffer	In PBS, 150 mM NaCl, pH 7.4 (50% glycerol, 0.02% sodium azide).
Storage Instruction	Store at -20°C for one year. After reconstitution, at 4°C for one month. It can also be aliquotted and stored frozen at -20°C for a longer time. Avoid repeated freezing and thawing.
Note	This product contains sodium azide: a POISONOUS AND HAZARDOUS SUBSTANCE which should be handled by trained staff only.

Applications

- ChIP

- Western Blot (Cell lysate)

Western Blot analysis of HeLa cell lysate with Methyl-Histone H3 (dimethyl K4) monoclonal antibody, clone AFF-8 (Cat # MAB20487).

- Immunohistochemistry (Formalin/PFA-fixed paraffin-embedded sections)

Immunohistochemical staining (Formalin-fixed paraffin-embedded sections) of human liver with Methyl-Histone H3 (dimethyl K4) monoclonal antibody, clone AFF-8 (Cat # MAB20487).

- Immunocytochemistry

- Immunofluorescence

- Immunoprecipitation

- Flow Cytometry