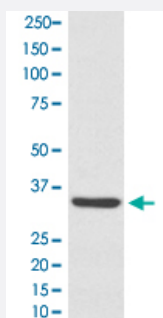


LYVE1 monoclonal antibody, clone AOCO-12

Catalog # MAB20462 Size 100 uL

Applications



Western Blot (Cell lysate)

Western Blot analysis of A549 cell lysate with LYVE1 monoclonal antibody, clone AOCO-12 (Cat # MAB20462).

Specification

Product Description	Rabbit monoclonal antibody raised against synthetic peptide of human LYVE1.
Immunogen	A synthetic peptide corresponding to human LYVE1.
Host	Rabbit
Theoretical MW (kDa)	35.213
Reactivity	Human
Form	Liquid
Purification	Affinity purification
Isotype	IgG
Recommend Usage	Western Blot (1:500-1:2000) The optimal working dilution should be determined by the end user.
Storage Buffer	In PBS, 150 mM NaCl, pH 7.4 (50% glycerol, 0.02% sodium azide).
Storage Instruction	Store at -20°C for one year. After reconstitution, at 4°C for one month. It can also be aliquotted and stored frozen at -20°C for a longer time. Avoid repeated freezing and thawing.

Note

This product contains sodium azide: a POISONOUS AND HAZARDOUS SUBSTANCE which should be handled by trained staff only.

Applications

- Western Blot (Cell lysate)

Western Blot analysis of A549 cell lysate with LYVE1 monoclonal antibody, clone AOCO-12 (Cat # MAB20462).

Gene Info — LYVE1

Entrez GeneID [10894](#)

Protein Accession# [Q9Y5Y7](#)

Gene Name LYVE1

Gene Alias CRSBP-1, HAR, LYVE-1, XLKD1

Gene Description lymphatic vessel endothelial hyaluronan receptor 1

Omim ID [605702](#)

Gene Ontology [Hyperlink](#)

Gene Summary This gene encodes a type I integral membrane glycoprotein. The encoded protein acts as a receptor and binds to both soluble and immobilized hyaluronan. This protein may function in lymphatic hyaluronan transport and have a role in tumor metastasis. [provided by RefSeq]

Other Designations cell surface retention sequence binding protein-1|extracellular link domain containing 1|extracellular link domain-containing 1|hyaluronic acid receptor

Disease

- [Lymphedema](#)