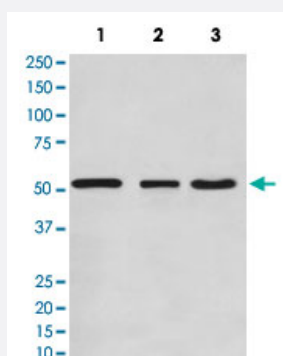


KLF4 monoclonal antibody, clone AODA-11

Catalog # MAB20425 Size 100 uL

Applications



Western Blot (Cell lysate)

Western Blot analysis of Lane 1: HeLa, Lane 2: NIH/3T3 and Lane 3: C6 cell lysates with KLF4 monoclonal antibody, clone AODA-11 (Cat # MAB20425).

Specification

Product Description Rabbit monoclonal antibody raised against synthetic peptide of human KLF4.

Immunogen A synthetic peptide corresponding to human KLF4.

Host Rabbit

Theoretical MW (kDa) 54.671

Reactivity Human

Form Liquid

Purification Affinity purification

Isotype IgG

Recommend Usage

- Immunocytochemistry (1:50-1:200)
- Immunofluorescence (1:50-1:200)
- Immunohistochemistry (1:50-1:200)
- Western Blot (1:500-1:2000)
- The optimal working dilution should be determined by the end user.

Storage Buffer	In PBS, 150 mM NaCl, pH 7.4 (50% glycerol, 0.02% sodium azide).
Storage Instruction	Store at -20°C for one year. After reconstitution, at 4°C for one month. It can also be aliquotted and stored frozen at -20°C for a longer time. Avoid repeated freezing and thawing.
Note	This product contains sodium azide: a POISONOUS AND HAZARDOUS SUBSTANCE which should be handled by trained staff only.

Applications

- Western Blot (Cell lysate)

Western Blot analysis of Lane 1: HeLa, Lane 2: NIH/3T3 and Lane 3: C6 cell lysates with KLF4 monoclonal antibody, clone AODA-11 (Cat # MAB20425).

- Immunohistochemistry
- Immunocytochemistry
- Immunofluorescence

Gene Info — KLF4

Entrez GeneID	9314
Protein Accession#	O43474
Gene Name	KLF4
Gene Alias	EZF, GKLF
Gene Description	Kruppel-like factor 4 (gut)
Omim ID	602253
Gene Ontology	Hyperlink
Other Designations	OTTHUMP00000021862 endothelial Kruppel-like zinc finger protein

Disease

- [Diabetes Mellitus](#)

- [Genetic Predisposition to Disease](#)