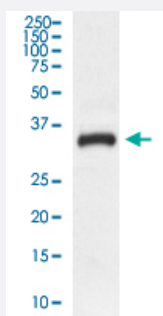


F11R monoclonal antibody, clone FOH-6

Catalog # MAB20408 Size 100 uL

Applications



Western Blot (Cell lysate)

Western Blot analysis of HeLa cell lysate with F11R monoclonal antibody, clone FOH-6 (Cat # MAB20408).

Specification

Product Description Rabbit monoclonal antibody raised against synthetic peptide of human F11R.

Immunogen A synthetic peptide corresponding to human F11R.

Host Rabbit

Theoretical MW (kDa) 32.583

Reactivity Human

Form Liquid

Purification Affinity purification

Isotype IgG

Recommend Usage Immunohistochemistry (1:50-1:200)
Western Blot (1:500-1:2000)
The optimal working dilution should be determined by the end user.

Storage Buffer In PBS, 150 mM NaCl, pH 7.4 (50% glycerol, 0.02% sodium azide).

Storage Instruction

Store at -20°C for one year. After reconstitution, at 4°C for one month. It can also be aliquotted and stored frozen at -20°C for a longer time. Avoid repeated freezing and thawing.

Note

This product contains sodium azide: a POISONOUS AND HAZARDOUS SUBSTANCE which should be handled by trained staff only.

Applications

- Western Blot (Cell lysate)

Western Blot analysis of HeLa cell lysate with F11R monoclonal antibody, clone FOH-6 (Cat # MAB20408).

- Immunohistochemistry

Gene Info — F11R

Entrez GeneID

[50848](#)

Protein Accession#

[Q9Y624](#)

Gene Name

F11R

Gene Alias

CD321, JAM, JAM-1, JAM-A, JAM1, JAMA, JCAM, KAT, PAM-1

Gene Description

F11 receptor

Omim ID

[605721](#)

Gene Ontology

[Hyperlink](#)

Gene Summary

Tight junctions represent one mode of cell-to-cell adhesion in epithelial or endothelial cell sheets, forming continuous seals around cells and serving as a physical barrier to prevent solutes and water from passing freely through the paracellular space. The protein encoded by this immunoglobulin superfamily gene member is an important regulator of tight junction assembly in epithelia. In addition, the encoded protein can act as (1) a receptor for reovirus, (2) a ligand for the integrin LFA1, involved in leukocyte transmigration, and (3) a platelet receptor. Multiple 5' alternatively spliced variants, encoding the same protein, have been identified but their biological validity has not been established. [provided by RefSeq]

Other Designations

OTTHUMP00000027880|OTTHUMP00000027881|junctional adhesion molecule 1|junctional adhesion molecule A|platelet F11 receptor|platelet adhesion molecule

Pathway

- [Cell adhesion molecules \(CAMs\)](#)
- [Epithelial cell signaling in Helicobacter pylori infection](#)
- [Leukocyte transendothelial migration](#)
- [Tight junction](#)

Disease

- [Cardiovascular Diseases](#)
- [Diabetes Mellitus](#)
- [Edema](#)
- [Hypertension](#)
- [Obesity](#)