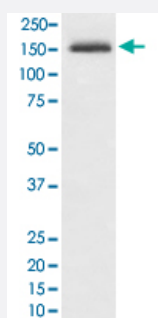


ITGA4 monoclonal antibody, clone IHH-9

Catalog # MAB20383 Size 100 uL

Applications



Western Blot (Cell lysate)

Western Blot analysis of Jurkat cell lysate with ITGA4 monoclonal antibody, clone IHH-9 (Cat # MAB20383).

Specification

Product Description	Rabbit monoclonal antibody raised against synthetic peptide of human ITGA4.
Immunogen	A synthetic peptide corresponding to human ITGA4.
Host	Rabbit
Theoretical MW (kDa)	114.9
Reactivity	Human
Form	Liquid
Purification	Affinity purification
Isotype	IgG
Recommend Usage	Western Blot (1:500-1:2000) The optimal working dilution should be determined by the end user.
Storage Buffer	In PBS, 150 mM NaCl, pH 7.4 (50% glycerol, 0.02% sodium azide).
Storage Instruction	Store at -20°C for one year. After reconstitution, at 4°C for one month. It can also be aliquotted and stored frozen at -20°C for a longer time. Avoid repeated freezing and thawing.

Note	This product contains sodium azide: a POISONOUS AND HAZARDOUS SUBSTANCE which should be handled by trained staff only.
-------------	--

Applications

- Western Blot (Cell lysate)

Western Blot analysis of Jurkat cell lysate with ITGA4 monoclonal antibody, clone IHH-9 (Cat # MAB20383).

Gene Info — ITGA4

Entrez GeneID	3676
Protein Accession#	P13612
Gene Name	ITGA4
Gene Alias	CD49D, IA4, MGC90518
Gene Description	integrin, alpha 4 (antigen CD49D, alpha 4 subunit of VLA-4 receptor)
Omim ID	192975
Gene Ontology	Hyperlink
Gene Summary	The product of this gene belongs to the integrin alpha chain family of proteins. Integrins are heterodimeric integral membrane proteins composed of an alpha chain and a beta chain. This gene encodes an alpha 4 chain. Unlike other integrin alpha chains, alpha 4 neither contains an I-domain, nor undergoes disulfide-linked cleavage. Alpha 4 chain associates with either beta 1 chain or beta 7 chain. [provided by RefSeq]
Other Designations	269C wild type antigen CD49D, alpha-4 subunit of VLA-4 receptor integrin alpha 4 integrin alpha-4 subunit very late activation protein 4 receptor, alpha 4 subunit

Pathway

- [Arrhythmogenic right ventricular cardiomyopathy \(ARVC\)](#)
- [Cell adhesion molecules \(CAMs\)](#)
- [ECM-receptor interaction](#)
- [Focal adhesion](#)

- [Hematopoietic cell lineage](#)
- [Hypertrophic cardiomyopathy \(HCM\)](#)
- [Leukocyte transendothelial migration](#)
- [Regulation of actin cytoskeleton](#)

Disease

- [Autistic Disorder](#)
- [Cardiovascular Diseases](#)
- [Diabetes Mellitus](#)
- [Edema](#)
- [Genetic Predisposition to Disease](#)
- [Graft vs Host Disease](#)
- [Multiple Sclerosis](#)
- [Neurogenic Inflammation](#)
- [Tobacco Use Disorder](#)