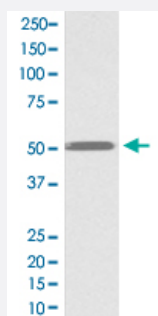


ILK monoclonal antibody, clone FHE-9

Catalog # MAB20377 Size 100 uL

Applications



Western Blot (Cell lysate)

Western Blot analysis of K562 cell lysate with ILK monoclonal antibody, clone FHE-9 (Cat # MAB20377).

Specification

Product Description Rabbit monoclonal antibody raised against synthetic peptide of human ILK.

Immunogen A synthetic peptide corresponding to human ILK.

Host Rabbit

Theoretical MW (kDa) 51.419

Reactivity Human

Form Liquid

Purification Affinity purification

Isotype IgG

Recommend Usage

- Flow Cytometry (1:50)
- Immunocytochemistry (1:50-1:200)
- Immunofluorescence (1:50-1:200)
- Immunohistochemistry (1:50-1:200)
- Immunoprecipitation (1:50)
- Western Blot (1:1000-1:5000)

The optimal working dilution should be determined by the end user.

Storage Buffer	In PBS, 150 mM NaCl, pH 7.4 (50% glycerol, 0.02% sodium azide).
Storage Instruction	Store at -20°C for one year. After reconstitution, at 4°C for one month. It can also be aliquotted and stored frozen at -20°C for a longer time. Avoid repeated freezing and thawing.
Note	This product contains sodium azide: a POISONOUS AND HAZARDOUS SUBSTANCE which should be handled by trained staff only.

Applications

- Western Blot (Cell lysate)

Western Blot analysis of K562 cell lysate with ILK monoclonal antibody, clone FHE-9 (Cat # MAB20377).

- Immunohistochemistry

- Immunocytochemistry

- Immunofluorescence

- Immunoprecipitation

- Flow Cytometry

Gene Info — ILK

Entrez GeneID	3611
Protein Accession#	Q13418
Gene Name	ILK
Gene Alias	DKFZp686F1765, P59
Gene Description	integrin-linked kinase
Omim ID	602366
Gene Ontology	Hyperlink

Gene Summary

Transduction of extracellular matrix signals through integrins influences intracellular and extracellular functions, and appears to require interaction of integrin cytoplasmic domains with cellular proteins. Integrin-linked kinase (ILK), interacts with the cytoplasmic domain of beta-1 integrin. This gene encodes a serine/threonine protein kinase with 4 ankyrin-like repeats, which associates with the cytoplasmic domain of beta integrins and acts as a proximal receptor kinase regulating integrin-mediated signal transduction. Multiple alternatively spliced transcript variants encoding the same protein have been found for this gene. [provided by RefSeq]

Other Designations

-

Pathway

- [Endometrial cancer](#)
- [Focal adhesion](#)
- [PPAR signaling pathway](#)