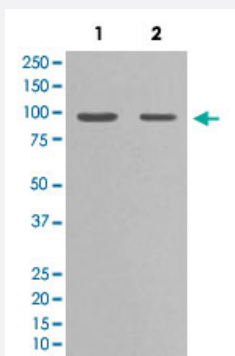


# HSP90AA1 monoclonal antibody, clone BAC-8

Catalog # MAB20343      Size 100 uL

## Applications



### Western Blot (Cell lysate)

Western Blot analysis of Lane 1: PC-12 and Lane 2: HeLa cell lysates with HSP90AA1 monoclonal antibody, clone BAC-8 (Cat # MAB20343).

## Specification

**Product Description** Rabbit monoclonal antibody raised against synthetic peptide of human HSP90AA1.

**Immunogen** A synthetic peptide corresponding to human HSP90AA1.

**Host** Rabbit

**Theoretical MW (kDa)** 84.66

**Reactivity** Human

**Form** Liquid

**Purification** Affinity purification

**Isotype** IgG

**Recommend Usage**

- Immunocytochemistry (1:50-1:200)
- Immunofluorescence (1:50-1:200)
- Immunoprecipitation (1:50)
- Western Blot (1:500-1:2000)
- The optimal working dilution should be determined by the end user.

Storage Buffer	In PBS, 150 mM NaCl, pH 7.4 (50% glycerol, 0.02% sodium azide).
Storage Instruction	Store at -20°C for one year. After reconstitution, at 4°C for one month. It can also be aliquotted and stored frozen at -20°C for a longer time. Avoid repeated freezing and thawing.
Note	This product contains sodium azide: a POISONOUS AND HAZARDOUS SUBSTANCE which should be handled by trained staff only.

## Applications

- Western Blot (Cell lysate)

Western Blot analysis of Lane 1: PC-12 and Lane 2: HeLa cell lysates with HSP90AA1 monoclonal antibody, clone BAC-8 (Cat # MAB20343).

- Immunocytochemistry

- Immunofluorescence

- Immunoprecipitation

## Gene Info — HSP90AA1

Entrez GeneID	<a href="#">3320</a>
Protein Accession#	<a href="#">P07900</a>
Gene Name	HSP90AA1
Gene Alias	FLJ31884, HSP86, HSP89A, HSP90A, HSP90N, HSPC1, HSPCA, HSPCAL1, HSPCAL4, HSPN, Hsp89, Hsp90, LAP2
Gene Description	heat shock protein 90kDa alpha (cytosolic), class A member 1
Omim ID	<a href="#">140571</a>
Gene Ontology	<a href="#">Hyperlink</a>
Gene Summary	HSP90 proteins are highly conserved molecular chaperones that have key roles in signal transduction, protein folding, protein degradation, and morphologic evolution. HSP90 proteins normally associate with other cochaperones and play important roles in folding newly synthesized proteins or stabilizing and refolding denatured proteins after stress. There are 2 major cytosolic HSP90 proteins, HSP90AA1, an inducible form, and HSP90AB1 (MIM 140572), a constitutive form. Other HSP90 proteins are found in endoplasmic reticulum (HSP90B1; MIM 191175) and mitochondria (TRAP1; MIM 606219) (Chen et al., 2005 [PubMed 16269234]).[supplied by OMIM]

**Other Designations**

heat shock 90kD protein 1, alpha|heat shock 90kD protein 1, alpha-like 4|heat shock 90kD protein, alpha-like 4|heat shock 90kDa protein 1, alpha

## Pathway

- [Antigen processing and presentation](#)
- [Pathways in cancer](#)
- [Prostate cancer](#)

## Disease

- [Asthma](#)
- [Cardiovascular Diseases](#)
- [Cleft Lip](#)
- [Cleft Palate](#)
- [Diabetes Mellitus](#)
- [Edema](#)