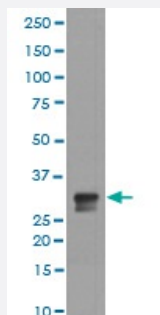


# CDC2 (phospho T14) monoclonal antibody, clone DFH-3

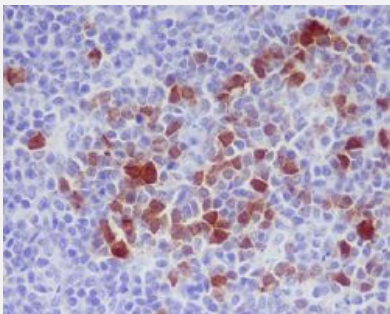
Catalog # MAB20339      Size 100 uL

## Applications



### Western Blot (Cell lysate)

Western blot analysis of CDC2 expression in HeLa cell lysate treated with hydroxyurea.



### Immunohistochemistry (Formalin/PFA-fixed paraffin-embedded sections)

Immunohistochemical staining of paraffin-embedded rat spleen with CDC2 (phospho T14) monoclonal antibody.

## Specification

<b>Product Description</b>	Rabbit monoclonal antibody raised against synthetic phosphopeptide of human CDC2.
<b>Immunogen</b>	A synthetic phosphopeptide corresponding to residues surrounding T14 of human CDC2.
<b>Host</b>	Rabbit
<b>Reactivity</b>	Human, Rat
<b>Form</b>	Liquid
<b>Purification</b>	Affinity purification
<b>Isotype</b>	IgG

<b>Recommend Usage</b>	Immunohistochemistry (1:50-1:200) Immunoprecipitation (1:50) Western Blot (1:500-1:2000) The optimal working dilution should be determined by the end user.
<b>Storage Buffer</b>	In PBS, 150 mM NaCl, pH 7.4 (50% glycerol, 0.4-0.5 mg/mL BSA, 0.02% sodium azide).
<b>Storage Instruction</b>	Store at -20°C for one year. After reconstitution, at 4°C for one month. It can also be aliquotted and stored frozen at -20°C for a longer time. Avoid repeated freezing and thawing.
<b>Note</b>	This product contains sodium azide: a POISONOUS AND HAZARDOUS SUBSTANCE which should be handled by trained staff only.

## Applications

- Western Blot (Cell lysate)

Western blot analysis of CDC2 expression in HeLa cell lysate treated with hydroxyurea.

- Immunohistochemistry (Formalin/PFA-fixed paraffin-embedded sections)

Immunohistochemical staining of paraffin-embedded rat spleen with CDC2 (phospho T14) monoclonal antibody.

- Immunoprecipitation

## Gene Info — CDC2

<b>Entrez GeneID</b>	<a href="#">983</a>
<b>Protein Accession#</b>	<a href="#">P06493</a>
<b>Gene Name</b>	CDC2
<b>Gene Alias</b>	CDC28A, CDK1, DKFZp686L20222, MGC111195
<b>Gene Description</b>	cell division cycle 2, G1 to S and G2 to M
<b>Omim ID</b>	<a href="#">116940</a>
<b>Gene Ontology</b>	<a href="#">Hyperlink</a>

**Gene Summary**

The protein encoded by this gene is a member of the Ser/Thr protein kinase family. This protein is a catalytic subunit of the highly conserved protein kinase complex known as M-phase promoting factor (MPF), which is essential for G1/S and G2/M phase transitions of eukaryotic cell cycle. Mitotic cyclins stably associate with this protein and function as regulatory subunits. The kinase activity of this protein is controlled by cyclin accumulation and destruction through the cell cycle. The phosphorylation and dephosphorylation of this protein also play important regulatory roles in cell cycle control. Alternatively spliced transcript variants encoding different isoforms have been found for this gene. [provided by RefSeq]

**Other Designations**

OTTHUMP00000019660|cell cycle controller CDC2|cell division control protein 2 homolog|cell division cycle 2 protein|cyclin-dependent kinase 1|p34 protein kinase

**Pathway**

- [Cell cycle](#)
- [Gap junction](#)
- [p53 signaling pathway](#)

**Disease**

- [Alzheimer disease](#)
- [Breast cancer](#)
- [Breast Neoplasms](#)
- [Dementia](#)
- [Genetic Predisposition to Disease](#)
- [Lung Neoplasms](#)
- [Pulmonary Disease](#)