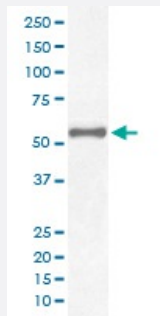


PAX7 monoclonal antibody, clone HGH-16

Catalog # MAB20295 Size 100 uL

Applications



Western Blot (Cell lysate)

Western blot analysis of HeLa cell lysate with PAX7 monoclonal antibody.

Specification

Product Description	Rabbit monoclonal antibody raised against synthetic peptide of human PAX7.
Immunogen	A synthetic peptide corresponding to human PAX7.
Host	Rabbit
Reactivity	Human
Form	Liquid
Purification	Affinity purification
Isotype	IgG
Recommend Usage	Flow Cytometry (1:100) Western Blot (1:1000-1:2000) The optimal working dilution should be determined by the end user.
Storage Buffer	In PBS, pH 7.4, 150mM NaCl, 0.02% sodium azide and 50% glycerol.
Storage Instruction	Store at -20°C for one year. After reconstitution, at 4°C for one month. It can also be aliquotted and stored frozen at -20°C for a longer time. Avoid repeated freezing and thawing.

Note

This product contains sodium azide: a POISONOUS AND HAZARDOUS SUBSTANCE which should be handled by trained staff only.

Applications

- Western Blot (Cell lysate)

Western blot analysis of HeLa cell lysate with PAX7 monoclonal antibody.

- Flow Cytometry

Gene Info — PAX7

Entrez GeneID	5081
---------------	----------------------

Protein Accession#	P23759
--------------------	------------------------

Gene Name	PAX7
-----------	------

Gene Alias	HUP1, PAX7B
------------	-------------

Gene Description	paired box 7
------------------	--------------

Omim ID	167410 268220
---------	---

Gene Ontology	Hyperlink
---------------	---------------------------

Gene Summary	This gene is a member of the paired box (PAX) family of transcription factors. Members of this gene family typically contain a paired box domain, an octapeptide, and a paired-type homeodomain. These genes play critical roles during fetal development and cancer growth. The specific function of the paired box 7 gene is unknown but speculated to involve tumor suppression since fusion of this gene with a forkhead domain family member has been associated with alveolar rhabdomyosarcoma. Three transcript variants encoding different isoforms have been found for this gene. [provided by RefSeq]
--------------	---

Other Designations	OTTHUMP00000002534 PAX7 transcriptional factor paired box gene 7 paired box homeotic gene 7 paired domain gene 7
--------------------	--

Disease

- [Cleft Lip](#)

- [Cleft Palate](#)

- [Genetic Predisposition to Disease](#)
- [Narcolepsy](#)