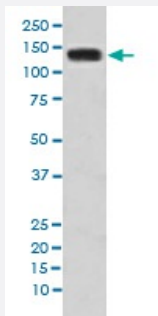


# CDH2 monoclonal antibody, clone FI-3

Catalog # MAB20226      Size 100 uL

## Applications



### Western Blot (Cell lysate)

Western blot analysis of HeLa cell lysate with CDH2 monoclonal antibody.

## Specification

<b>Product Description</b>	Rabbit monoclonal antibody raised against synthetic peptide of human CDH2.
<b>Immunogen</b>	A synthetic peptide corresponding to human CDH2.
<b>Host</b>	Rabbit
<b>Reactivity</b>	Human
<b>Form</b>	Liquid
<b>Purification</b>	Affinity purification
<b>Isotype</b>	IgG
<b>Recommend Usage</b>	Immunohistochemistry (1:50-1:200) Western Blot (1:500-1:2000) The optimal working dilution should be determined by the end user.
<b>Storage Buffer</b>	In PBS, pH 7.4, 150mM NaCl, 0.02% sodium azide and 50% glycerol.
<b>Storage Instruction</b>	Store at -20°C for one year. After reconstitution, at 4°C for one month. It can also be aliquotted and stored frozen at -20°C for a longer time. Avoid repeated freezing and thawing.

## Note

This product contains sodium azide: a POISONOUS AND HAZARDOUS SUBSTANCE which should be handled by trained staff only.

## Applications

- Western Blot (Cell lysate)

Western blot analysis of HeLa cell lysate with CDH2 monoclonal antibody.

- Immunohistochemistry (Formalin/PFA-fixed paraffin-embedded sections)

## Gene Info — CDH2

Entrez GeneID [1000](#)

Protein Accession# [P19022](#)

Gene Name CDH2

Gene Alias CD325, CDHN, CDw325, NCAD

Gene Description cadherin 2, type 1, N-cadherin (neuronal)

Omim ID [114020](#)

Gene Ontology [Hyperlink](#)

**Gene Summary** This gene is a classical cadherin from the cadherin superfamily. The encoded protein is a calcium dependent cell-cell adhesion glycoprotein comprised of five extracellular cadherin repeats, a trans membrane region and a highly conserved cytoplasmic tail. The protein functions during gastrulation and is required for establishment of left-right asymmetry. At certain central nervous system synapses, presynaptic to postsynaptic adhesion is mediated at least in part by this gene product. [provided by RefSeq]

**Other Designations** N-cadherin 1|cadherin 2, N-cadherin (neuronal)|cadherin 2, type 1|calcium-dependent adhesion protein, neuronal|neural cadherin

## Pathway

- [Arrhythmogenic right ventricular cardiomyopathy \(ARVC\)](#)
- [Cell adhesion molecules \(CAMs\)](#)

## Disease

- [Cleft Lip](#)
- [Cleft Palate](#)
- [Esophageal Neoplasms](#)
- [Genetic Predisposition to Disease](#)
- [Head and Neck Neoplasms](#)
- [Laryngeal Neoplasms](#)
- [Mouth Neoplasms](#)
- [Pharyngeal Neoplasms](#)
- [Tobacco Use Disorder](#)
- [Tooth Abnormalities](#)