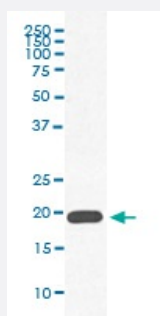


MB monoclonal antibody, clone FOD-13

Catalog # MAB20223 Size 100 uL

Applications



Western Blot (Cell lysate)

Western blot analysis of human heart muscle lysate with MB monoclonal antibody.

Specification

Product Description Rabbit monoclonal antibody raised against synthetic peptide of human MB.

Immunogen A synthetic peptide corresponding to human MB.

Host Rabbit

Reactivity Human

Form Liquid

Purification Affinity purification

Isotype IgG

Recommend Usage

- Immunocytochemistry (1:50-1:200)
- Immunofluorescence (1:50-1:200)
- Immunohistochemistry (1:50-1:200)
- Immunoprecipitation (1:30)
- Western Blot (1:500-1:2000)
- The optimal working dilution should be determined by the end user.

Storage Buffer In PBS, pH 7.4, 150mM NaCl, 0.02% sodium azide and 50% glycerol.

Storage Instruction

Store at -20°C for one year. After reconstitution, at 4°C for one month. It can also be aliquotted and stored frozen at -20°C for a longer time. Avoid repeated freezing and thawing.

Note

This product contains sodium azide: a POISONOUS AND HAZARDOUS SUBSTANCE which should be handled by trained staff only.

Applications

- Western Blot (Cell lysate)

Western blot analysis of human heart muscle lysate with MB monoclonal antibody.

- Immunohistochemistry (Formalin/PFA-fixed paraffin-embedded sections)

- Immunocytochemistry

- Immunofluorescence

- Immunoprecipitation

Gene Info — MB

Entrez GeneID[4151](#)**Protein Accession#**[P02144](#)**Gene Name**

MB

Gene Alias

MGC13548, PVALB

Gene Description

myoglobin

Omim ID[160000](#)**Gene Ontology**[Hyperlink](#)**Gene Summary**

This gene encodes a member of the globin superfamily and is expressed in skeletal and cardiac muscles. The encoded protein is a haemoprotein contributing to intracellular oxygen storage and transcellular facilitated diffusion of oxygen. At least three alternatively spliced transcript variants encoding the same protein have been reported. [provided by RefSeq]

Other Designations

-