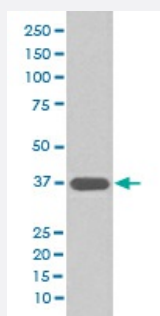


# MSI2 monoclonal antibody, clone FOB-13

Catalog # MAB20210      Size 100 uL

## Applications



### Western Blot (Cell lysate)

Western blot analysis of T47D cell lysate with MSI2 monoclonal antibody.

## Specification

**Product Description** Rabbit monoclonal antibody raised against synthetic peptide of human MSI2.

**Immunogen** A synthetic peptide corresponding to human MSI2.

**Host** Rabbit

**Reactivity** Human

**Form** Liquid

**Purification** Affinity purification

**Isotype** IgG

**Recommend Usage**

- Flow Cytometry (1:30)
- Immunocytochemistry (1:50-1:200)
- Immunofluorescence (1:50-1:200)
- Immunohistochemistry (1:50-1:200)
- Western Blot (1:500-1:2000)
- The optimal working dilution should be determined by the end user.

**Storage Buffer** In PBS, pH 7.4, 150mM NaCl, 0.02% sodium azide and 50% glycerol.

**Storage Instruction**

Store at -20°C for one year. After reconstitution, at 4°C for one month. It can also be aliquotted and stored frozen at -20°C for a longer time. Avoid repeated freezing and thawing.

**Note**

This product contains sodium azide: a POISONOUS AND HAZARDOUS SUBSTANCE which should be handled by trained staff only.

## Applications

- Western Blot (Cell lysate)

Western blot analysis of T47D cell lysate with MSI2 monoclonal antibody.

- Immunohistochemistry (Formalin/PFA-fixed paraffin-embedded sections)

- Immunocytochemistry

- Immunofluorescence

- Flow Cytometry

## Gene Info — MSI2

**Entrez GeneID** [124540](#)

**Protein Accession#** [Q96DH6](#)

**Gene Name** MSI2

**Gene Alias** FLJ36569, MGC3245, MSI2H

**Gene Description** musashi homolog 2 (Drosophila)

**Omim ID** [607897](#)

**Gene Ontology** [Hyperlink](#)

**Gene Summary** This gene encodes a protein containing two conserved tandem RNA recognition motifs. Similar proteins in other species function as RNA-binding proteins and play central roles in posttranscriptional gene regulation. Two transcript variants encoding distinct isoforms have been identified for this gene. [provided by RefSeq]

**Other Designations** musashi 2

## Disease

- [Cardiovascular Diseases](#)
- [Diabetes Mellitus](#)
- [Edema](#)
- [Tobacco Use Disorder](#)