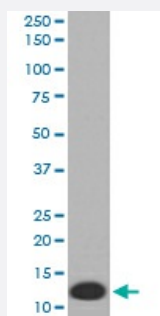


# S100A8 monoclonal antibody, clone CFC-19

Catalog # MAB20208

Size 100 uL

## Applications



### Western Blot (Cell lysate)

Western blot analysis of HL-60 cell lysate with S100A8 monoclonal antibody.

## Specification

**Product Description** Rabbit monoclonal antibody raised against synthetic peptide of human S100A8.

**Immunogen** A synthetic peptide corresponding to human S100A8.

**Host** Rabbit

**Reactivity** Human

**Form** Liquid

**Purification** Affinity purification

**Isotype** IgG

**Recommend Usage**  
Immunohistochemistry (1:50-1:200)  
Immunoprecipitation (1:30)  
Western Blot (1:500-1:2000)  
The optimal working dilution should be determined by the end user.

**Storage Buffer** In PBS, pH 7.4, 150mM NaCl, 0.02% sodium azide and 50% glycerol.

**Storage Instruction** Store at -20°C for one year. After reconstitution, at 4°C for one month. It can also be aliquotted and stored frozen at -20°C for a longer time. Avoid repeated freezing and thawing.

## Note

This product contains sodium azide: a POISONOUS AND HAZARDOUS SUBSTANCE which should be handled by trained staff only.

## Applications

- Western Blot (Cell lysate)

Western blot analysis of HL-60 cell lysate with S100A8 monoclonal antibody.

- Immunohistochemistry (Formalin/PFA-fixed paraffin-embedded sections)

- Immunoprecipitation

## Gene Info — S100A8

Entrez GeneID [6279](#)

Protein Accession# [P05109](#)

Gene Name S100A8

Gene Alias 60B8AG, CAGA, CFAG, CGLA, CP-10, L1Ag, MA387, MIF, MRP8, NIF, P8

Gene Description S100 calcium binding protein A8

Omim ID [123885](#)

Gene Ontology [Hyperlink](#)

## Gene Summary

The protein encoded by this gene is a member of the S100 family of proteins containing 2 EF-hand calcium-binding motifs. S100 proteins are localized in the cytoplasm and/or nucleus of a wide range of cells, and involved in the regulation of a number of cellular processes such as cell cycle progression and differentiation. S100 genes include at least 13 members which are located as a cluster on chromosome 1q21. This protein may function in the inhibition of casein kinase and as a cytokine. Altered expression of this protein is associated with the disease cystic fibrosis. [provided by RefSeq]

## Other Designations

OTTHUMP00000015329|OTTHUMP00000015330|S100 calcium-binding protein A8|S100 calcium-binding protein A8 (calgranulin A)|calgranulin A|cystic fibrosis antigen

## Disease

- [Aggressive Periodontitis](#)

- [Dermatitis](#)
- [Genetic Predisposition to Disease](#)
- [Kidney Calculi](#)
- [Periodontitis](#)