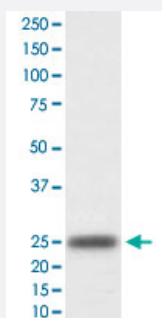


HAMP monoclonal antibody, clone AAHH-8

Catalog # MAB20136 Size 100 uL

Applications



Western Blot (Tissue lysate)

Western Blot analysis of human plasma lysate with HAMP monoclonal antibody, clone AAHH-8 (Cat # MAB20136).

Specification

Product Description	Rabbit monoclonal antibody raised against synthetic peptide of human HAMP.
Immunogen	A synthetic peptide corresponding to human HAMP.
Host	Rabbit
Theoretical MW (kDa)	9.408
Reactivity	Human
Form	Liquid
Purification	Affinity purification
Isotype	IgG
Recommend Usage	Western Blot (1:500-1:2000) The optimal working dilution should be determined by the end user.
Storage Buffer	In PBS, 150 mM NaCl, pH 7.4 (50% glycerol, 0.02% sodium azide).
Storage Instruction	Store at -20°C for one year. After reconstitution, at 4°C for one month. It can also be aliquotted and stored frozen at -20°C for a longer time. Avoid repeated freezing and thawing.

Note

This product contains sodium azide: a POISONOUS AND HAZARDOUS SUBSTANCE which should be handled by trained staff only.

Applications

- Western Blot (Tissue lysate)

Western Blot analysis of human plasma lysate with HAMP monoclonal antibody, clone AAHH-8 (Cat # MAB20136).

Gene Info — HAMP

Entrez GeneID [57817](#)

Protein Accession# [P81172](#)

Gene Name HAMP

Gene Alias HEPC, HEPCIDIN, HFE2B, LEAP-1, LEAP1, PLTR

Gene Description hepcidin antimicrobial peptide

Omim ID [602390 606464](#)

Gene Ontology [Hyperlink](#)

Gene Summary The product encoded by this gene is involved in the maintenance of iron homeostasis, and it is necessary for the regulation of iron storage in macrophages, and for intestinal iron absorption. The preproprotein is post-translationally cleaved into mature peptides of 20, 22 and 25 amino acids, and these active peptides are rich in cysteines, which form intramolecular bonds that stabilize their beta-sheet structures. These peptides exhibit antimicrobial activity. Mutations in this gene cause hemochromatosis type 2B, also known as juvenile hemochromatosis, a disease caused by severe iron overload that results in cardiomyopathy, cirrhosis, and endocrine failure. [provided by RefSeq]

Other Designations liver-expressed antimicrobial peptide|putative liver tumor regressor

Disease

- [Abortion](#)
- [beta-Thalassemia](#)
- [Birth Weight](#)
- [Genetic Predisposition to Disease](#)

- [Hemochromatosis](#)
- [Hereditary hemochromatosis](#)
- [Iron Metabolism Disorders](#)
- [Iron Overload](#)
- [Pregnancy Complications](#)