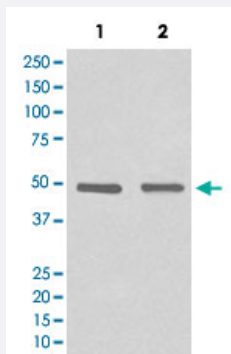


# HDAC3 monoclonal antibody, clone EFH-8

Catalog # MAB20125      Size 100 uL

## Applications



### Western Blot (Cell lysate)

Western Blot analysis of Lane 1: HeLa and Lane 2: NIH/3T3 cell lysates with HDAC3 monoclonal antibody, clone EFH-8 (Cat # MAB20125).

## Specification

**Product Description** Rabbit monoclonal antibody raised against synthetic peptide of human HDAC3.

**Immunogen** A synthetic peptide corresponding to human HDAC3.

**Host** Rabbit

**Theoretical MW (kDa)** 48.848

**Reactivity** Human

**Form** Liquid

**Purification** Affinity purification

**Isotype** IgG

**Recommend Usage**

- Immunocytochemistry (1:50-1:200)
- Immunofluorescence (1:50-1:200)
- Immunohistochemistry (1:50-1:100)
- Immunoprecipitation (1:30)
- Western Blot (1:1000-1:2000)
- The optimal working dilution should be determined by the end user.

<b>Storage Buffer</b>	In PBS, 150 mM NaCl, pH 7.4 (50% glycerol, 0.02% sodium azide).
<b>Storage Instruction</b>	Store at -20°C for one year. After reconstitution, at 4°C for one month. It can also be aliquotted and stored frozen at -20°C for a longer time. Avoid repeated freezing and thawing.
<b>Note</b>	This product contains sodium azide: a POISONOUS AND HAZARDOUS SUBSTANCE which should be handled by trained staff only.

## Applications

- Western Blot (Cell lysate)

Western Blot analysis of Lane 1: HeLa and Lane 2: NIH/3T3 cell lysates with HDAC3 monoclonal antibody, clone EFH-8 (Cat # MAB20125).

- Immunohistochemistry
- Immunocytochemistry
- Immunofluorescence
- Immunoprecipitation

## Gene Info — HDAC3

<b>Entrez GeneID</b>	<a href="#">8841</a>
<b>Protein Accession#</b>	<a href="#">O15379</a>
<b>Gene Name</b>	HDAC3
<b>Gene Alias</b>	HD3, RPD3, RPD3-2
<b>Gene Description</b>	histone deacetylase 3
<b>Omim ID</b>	<a href="#">605166</a>
<b>Gene Ontology</b>	<a href="#">Hyperlink</a>
<b>Other Designations</b>	-

## Disease

- [Asthma](#)
- [Genetic Predisposition to Disease](#)
- [Schizophrenia](#)