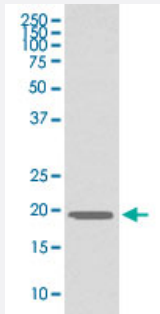


GCG monoclonal antibody, clone AOAF-7

Catalog # MAB20093 Size 100 uL

Applications



Western Blot (Cell lysate)

Western Blot analysis of HepG2 cell lysate with GCG monoclonal antibody, clone AOAF-7 (Cat # MAB20093).

Specification

Product Description Rabbit monoclonal antibody raised against synthetic peptide of human GCG.

Immunogen A synthetic peptide corresponding to human GCG.

Host Rabbit

Theoretical MW (kDa) 20.909

Reactivity Human

Form Liquid

Purification Affinity purification

Isotype IgG

Recommend Usage
Immunohistochemistry (1:50-1:200)
Western Blot (1:500-1:2000)
The optimal working dilution should be determined by the end user.

Storage Buffer In PBS, 150 mM NaCl, pH 7.4 (50% glycerol, 0.02% sodium azide).

Storage Instruction

Store at -20°C for one year. After reconstitution, at 4°C for one month. It can also be aliquotted and stored frozen at -20°C for a longer time. Avoid repeated freezing and thawing.

Note

This product contains sodium azide: a POISONOUS AND HAZARDOUS SUBSTANCE which should be handled by trained staff only.

Applications

- Western Blot (Cell lysate)

Western Blot analysis of HepG2 cell lysate with GCG monoclonal antibody, clone AOAF-7 (Cat # MAB20093).

- Immunohistochemistry

Gene Info — GCG

Entrez GeneID [2641](#)

Protein Accession# [P01275](#)

Gene Name GCG

Gene Alias GLP1, GLP2, GRPP

Gene Description glucagon

Omim ID [138030](#)

Gene Ontology [Hyperlink](#)

Gene Summary

The protein encoded by this gene is actually a preproprotein that is cleaved into four distinct mature peptides. One of these, glucagon, is a pancreatic hormone that counteracts the glucose-lowering action of insulin by stimulating glycogenolysis and gluconeogenesis. Glucagon is a ligand for a specific G-protein linked receptor whose signalling pathway controls cell proliferation. Two of the other peptides are secreted from gut endocrine cells and promote nutrient absorption through distinct mechanisms. Finally, the fourth peptide is similar to glicentin, an active enteroglucagon. [provided by RefSeq]

Other Designations glicentin-related polypeptide|glucagon-like peptide 1|glucagon-like peptide 2

Pathway

- [Neuroactive ligand-receptor interaction](#)

Disease

- [Atherosclerosis](#)
- [Calcinosis](#)
- [Cardiovascular Diseases](#)
- [Coronary Artery Disease](#)
- [Diabetes Mellitus](#)
- [Drug Toxicity](#)
- [Edema](#)
- [Obesity](#)