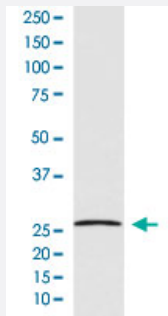


GDNF monoclonal antibody, clone ABDB-7

Catalog # MAB20084 Size 100 uL

Applications



Western Blot (Cell lysate)

Western Blot analysis of HepG2 cell lysate with GDNF monoclonal antibody, clone ABDB-7 (Cat # MAB20084).

Specification

Product Description Rabbit monoclonal antibody raised against synthetic peptide of human GDNF.

Immunogen A synthetic peptide corresponding to human GDNF.

Host Rabbit

Theoretical MW (kDa) 23.72

Reactivity Human

Form Liquid

Purification Affinity purification

Isotype IgG

Recommend Usage
Flow Cytometry (1:50)
Western Blot (1:500-1:2000)
The optimal working dilution should be determined by the end user.

Storage Buffer In PBS, 150 mM NaCl, pH 7.4 (50% glycerol, 0.02% sodium azide).

Storage Instruction

Store at -20°C for one year. After reconstitution, at 4°C for one month. It can also be aliquotted and stored frozen at -20°C for a longer time. Avoid repeated freezing and thawing.

Note

This product contains sodium azide: a POISONOUS AND HAZARDOUS SUBSTANCE which should be handled by trained staff only.

Applications

- Western Blot (Cell lysate)

Western Blot analysis of HepG2 cell lysate with GDNF monoclonal antibody, clone ABDB-7 (Cat # MAB20084).

- Flow Cytometry

Gene Info — GDNF

Entrez GeneID[2668](#)**Protein Accession#**[P39905](#)**Gene Name**

GDNF

Gene Alias

ATF1, ATF2, HFB1-GDNF

Gene Description

glial cell derived neurotrophic factor

Omim ID[142623](#) [171300](#) [209880](#) [600837](#)**Gene Ontology**[Hyperlink](#)**Gene Summary**

This gene encodes a highly conserved neurotrophic factor. The recombinant form of this protein was shown to promote the survival and differentiation of dopaminergic neurons in culture, and was able to prevent apoptosis of motor neurons induced by axotomy. The encoded protein is processed to a mature secreted form that exists as a homodimer. The mature form of the protein is a ligand for the product of the RET (rearranged during transfection) protooncogene. In addition to the transcript encoding GDNF, two additional alternative transcripts encoding distinct proteins, referred to as astrocyte-derived trophic factors, have also been described. Mutations in this gene may be associated with Hirschsprung disease. [provided by RefSeq]

Other Designations

astrocyte-derived trophic factor|glial cell line derived neurotrophic factor|glial derived neurotrophic factor

Disease

- [Attention Deficit Disorder with Hyperactivity](#)
- [Celiac Disease](#)
- [Genetic Predisposition to Disease](#)
- [Hirschsprung Disease](#)
- [Hydronephrosis](#)
- [Malignant melanoma](#)
- [Melanoma](#)
- [Mental Disorders](#)
- [Narcolepsy](#)
- [Neoplasm Invasiveness](#)
- [Schizophrenia](#)
- [Skin Neoplasms](#)
- [Sleep Apnea](#)
- [Tourette Syndrome](#)
- [Vesico-Ureteral Reflux](#)