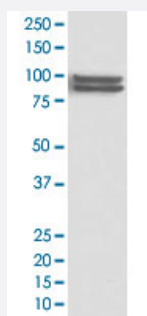


FOXP1 monoclonal antibody, clone AOGO-6

Catalog # MAB20062 Size 100 uL

Applications



Western Blot (Cell lysate)

Western Blot analysis of Daudi cell lysate with FOXP1 monoclonal antibody, clone AOGO-6 (Cat # MAB20062).

Specification

Product Description	Rabbit monoclonal antibody raised against synthetic peptide of human FOXP1.
Immunogen	A synthetic peptide corresponding to human FOXP1.
Host	Rabbit
Theoretical MW (kDa)	75.317
Reactivity	Human
Form	Liquid
Purification	Affinity purification
Isotype	IgG
Recommend Usage	Western Blot (1:500-1:2000) The optimal working dilution should be determined by the end user.
Storage Buffer	In PBS, 150 mM NaCl, pH 7.4 (50% glycerol, 0.02% sodium azide).
Storage Instruction	Store at -20°C for one year. After reconstitution, at 4°C for one month. It can also be aliquotted and stored frozen at -20°C for a longer time. Avoid repeated freezing and thawing.

Note

This product contains sodium azide: a POISONOUS AND HAZARDOUS SUBSTANCE which should be handled by trained staff only.

Applications

- Western Blot (Cell lysate)

Western Blot analysis of Daudi cell lysate with FOXP1 monoclonal antibody, clone AOGO-6 (Cat # MAB20062).

Gene Info — FOXP1

Entrez GeneID [27086](#)

Protein Accession# [Q9H334](#)

Gene Name FOXP1

Gene Alias 12CC4, FLJ23741, HSPC215, MGC12942, MGC88572, MGC99551, QRF1, hFKH1B

Gene Description forkhead box P1

Omim ID [605515](#)

Gene Ontology [Hyperlink](#)

Gene Summary This gene belongs to subfamily P of the forkhead box (FOX) transcription factor family. Forkhead box transcription factors play important roles in the regulation of tissue- and cell type-specific gene transcription during both development and adulthood. Forkhead box P1 protein contains both DNA-binding- and protein-protein binding-domains. This gene may act as a tumor suppressor as it is lost in several tumor types and maps to a chromosomal region (3p14.1) reported to contain a tumor suppressor gene(s). Alternative splicing results in multiple transcript variants encoding different isoforms. [provided by RefSeq]

Other Designations fork head-related protein like B|glutamine-rich factor 1

Disease

- [Apraxias](#)
- [Cardiovascular Diseases](#)
- [Developmental Disabilities](#)
- [Diabetes Mellitus](#)

- [Edema](#)
- [Genetic Predisposition to Disease](#)
- [Tobacco Use Disorder](#)
- [Vitiligo](#)