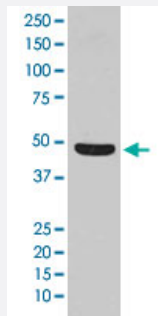


FLOT1 monoclonal antibody, clone BHG-6

Catalog # MAB20050 Size 100 uL

Applications



Western Blot (Cell lysate)

Western Blot analysis of HeLa cell lysate with FLOT1 monoclonal antibody, clone BHG-6 (Cat # MAB20050).

Specification

Product Description	Rabbit monoclonal antibody raised against synthetic peptide of human FLOT1.
Immunogen	A synthetic peptide corresponding to human FLOT1.
Host	Rabbit
Theoretical MW (kDa)	47.355
Reactivity	Human
Form	Liquid
Purification	Affinity purification
Isotype	IgG
Recommend Usage	Western Blot (1:500-1:2000) The optimal working dilution should be determined by the end user.
Storage Buffer	In PBS, 150 mM NaCl, pH 7.4 (50% glycerol, 0.02% sodium azide).
Storage Instruction	Store at -20°C for one year. After reconstitution, at 4°C for one month. It can also be aliquotted and stored frozen at -20°C for a longer time. Avoid repeated freezing and thawing.

Note

This product contains sodium azide: a POISONOUS AND HAZARDOUS SUBSTANCE which should be handled by trained staff only.

Applications

- Western Blot (Cell lysate)

Western Blot analysis of HeLa cell lysate with FLOT1 monoclonal antibody, clone BHG-6 (Cat # MAB20050).

Gene Info — FLOT1

Entrez GeneID [10211](#)

Protein Accession# [O75955](#)

Gene Name FLOT1

Gene Alias -

Gene Description flotillin 1

Omim ID [606998](#)

Gene Ontology [Hyperlink](#)

Gene Summary Caveolae are small domains on the inner cell membrane involved in vesicular trafficking and signal transduction. FLOT1 encodes a caveolae-associated, integral membrane protein. The function of flotillin 1 has not been determined. [provided by RefSeq]

Other Designations OTTHUMP00000029208|integral membrane component of caveolae

Pathway

- [Insulin signaling pathway](#)

Disease

- [Genetic Predisposition to Disease](#)
- [Lupus Erythematosus](#)