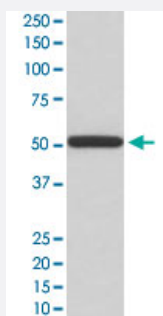


PDIA3 monoclonal antibody, clone ABOE-16

Catalog # MAB20024

Size 100 uL

Applications



Western Blot (Cell lysate)

Western Blot analysis of HepG2 cell lysate with PDIA3 monoclonal antibody, clone ABOE-16 (Cat # MAB20024).

Specification

Product Description Rabbit monoclonal antibody raised against synthetic peptide of human PDIA3.

Immunogen A synthetic peptide corresponding to human PDIA3.

Host Rabbit

Theoretical MW (kDa) 56.782

Reactivity Human

Form Liquid

Purification Affinity purification

Isotype IgG

Recommend Usage
 Immunohistochemistry (1:50-1:200)
 Immunoprecipitation (1:50)
 Western Blot (1:500-1:2000)
 The optimal working dilution should be determined by the end user.

Storage Buffer In PBS, 150 mM NaCl, pH 7.4 (50% glycerol, 0.02% sodium azide).

Storage Instruction

Store at -20°C for one year. After reconstitution, at 4°C for one month. It can also be aliquotted and stored frozen at -20°C for a longer time. Avoid repeated freezing and thawing.

Note

This product contains sodium azide: a POISONOUS AND HAZARDOUS SUBSTANCE which should be handled by trained staff only.

Applications

- Western Blot (Cell lysate)

Western Blot analysis of HepG2 cell lysate with PDIA3 monoclonal antibody, clone ABOE-16 (Cat # MAB20024).

- Immunohistochemistry

- Immunoprecipitation

Gene Info — PDIA3

Entrez GeneID[2923](#)**Protein Accession#**[P30101](#)**Gene Name**

PDIA3

Gene Alias

ER60, ERp57, ERp60, ERp61, GRP57, GRP58, HsT17083, P58, PI-PLC

Gene Description

protein disulfide isomerase family A, member 3

Omim ID[602046](#)**Gene Ontology**[Hyperlink](#)**Gene Summary**

This gene encodes a protein of the endoplasmic reticulum that interacts with lectin chaperones calreticulin and calnexin to modulate folding of newly synthesized glycoproteins. The protein was once thought to be a phospholipase; however, it has been demonstrated that the protein actually has protein disulfide isomerase activity. It is thought that complexes of lectins and this protein mediate protein folding by promoting formation of disulfide bonds in their glycoprotein substrates. [provided by RefSeq]

Other Designations

58 kDa microsomal protein|OTTHUMP00000041709|endoplasmic reticulum P58|glucose regulated protein, 58kDa|phospholipase C-alpha|protein disulfide isomerase-associated 3|protein disulfide-isomerase A3

Pathway

- [Antigen processing and presentation](#)

Disease

- [Genetic Predisposition to Disease](#)
- [Prostatic Neoplasms](#)