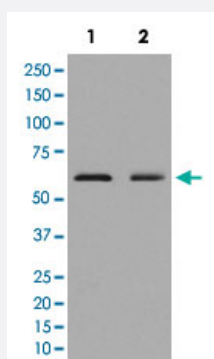


# ELK1 monoclonal antibody, clone CHG-5

Catalog # MAB20009      Size 100  $\mu$ L

## Applications



### Western Blot (Cell lysate)

Western Blot analysis of Lane 1: Neuro-2a and Lane 2: K562 cell lysates with ELK1 monoclonal antibody, clone CHG-5 (Cat # MAB20009).

## Specification

**Product Description** Rabbit monoclonal antibody raised against synthetic peptide of human ELK1.

**Immunogen** A synthetic peptide corresponding to human ELK1.

**Host** Rabbit

**Theoretical MW (kDa)** 44.888

**Reactivity** Human

**Form** Liquid

**Purification** Affinity purification

**Isotype** IgG

**Recommend Usage**

- Immunocytochemistry (1:50-1:200)
- Immunofluorescence (1:50-1:200)
- Immunohistochemistry (1:50-1:200)
- Immunoprecipitation (1:30)
- Western Blot (1:500-1:1000)
- The optimal working dilution should be determined by the end user.

|                            |   |
|----------------------------|---|
| <b>Storage Buffer</b>      | In PBS, 150 mM NaCl, pH 7.4 (50% glycerol, 0.02% sodium azide).   |
| <b>Storage Instruction</b> | Store at -20°C for one year. After reconstitution, at 4°C for one month. It can also be aliquotted and stored frozen at -20°C for a longer time. Avoid repeated freezing and thawing. |
| <b>Note</b>                | This product contains sodium azide: a POISONOUS AND HAZARDOUS SUBSTANCE which should be handled by trained staff only.  |

## Applications

- Western Blot (Cell lysate)

Western Blot analysis of Lane 1: Neuro-2a and Lane 2: K562 cell lysates with ELK1 monoclonal antibody, clone CHG-5 (Cat # MAB20009).

- Immunohistochemistry

- Immunocytochemistry

- Immunofluorescence

- Immunoprecipitation

## Gene Info — ELK1

|                           |  |
|---------------------------|--|
| <b>Entrez GeneID</b>      | <a href="#">2002</a>   |
| <b>Protein Accession#</b> | <a href="#">P19419</a>   |
| <b>Gene Name</b>          | ELK1   |
| <b>Gene Alias</b>         | -  |
| <b>Gene Description</b>   | ELK1, member of ETS oncogene family  |
| <b>Omim ID</b>            | <a href="#">311040</a>   |
| <b>Gene Ontology</b>      | <a href="#">Hyperlink</a>  |
| <b>Gene Summary</b>       | This gene is a member of the Ets family of transcription factors and of the ternary complex factor (TCF) subfamily. Proteins of the TCF subfamily form a ternary complex by binding to the the serum response factor and the serum reponse element in the promoter of the c-fos proto-oncogene. The protein encoded by this gene is a nuclear target for the ras-raf-MAPK signaling cascade. Alternately spliced transcript variants encoding the same protein have been found for this gene. [provided by RefSeq] |

Other Designations

ELK1 protein|OTTHUMP00000023224|OTTHUMP00000023225

## Pathway

- [Endometrial cancer](#)
- [ErbB signaling pathway](#)
- [Focal adhesion](#)
- [GnRH signaling pathway](#)
- [Insulin signaling pathway](#)
- [MAPK signaling pathway](#)
- [Prion diseases](#)

## Disease

- [Cardiovascular Diseases](#)
- [Diabetes Mellitus](#)
- [Edema](#)