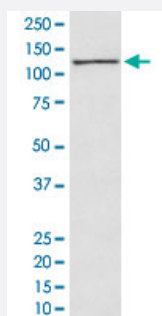


TGFBI monoclonal antibody, clone EA-20

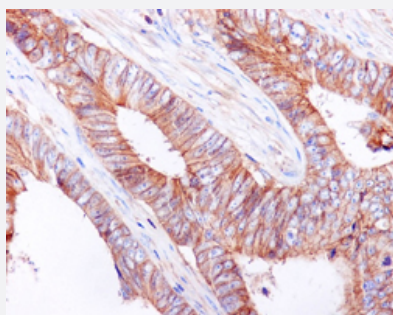
Catalog # MAB19997 Size 100 uL

Applications



Western Blot (Cell lysate)

Western Blot analysis of MCF7 cell lysate with TGFBI monoclonal antibody, clone EA-20 (Cat # MAB19997).



Immunohistochemistry (Formalin/PFA-fixed paraffin-embedded sections)

Immunohistochemical staining (Formalin-fixed paraffin-embedded sections) of human colon cancer with TGFBI monoclonal antibody, clone EA-20 (Cat # MAB19997).

Specification

Product Description	Rabbit monoclonal antibody raised against synthetic peptide of human TGFBI.
Immunogen	A synthetic peptide corresponding to human TGFBI.
Host	Rabbit
Theoretical MW (kDa)	74.681
Reactivity	Human
Form	Liquid
Purification	Affinity purification

Isotype	IgG
Recommend Usage	Flow Cytometry (1:50) Immunocytochemistry (1:50-1:200) Immunofluorescence (1:50-1:200) Immunohistochemistry (Formalin/PFA-fixed paraffin-embedded sections) (1:50-1:200) Immunoprecipitation (1:50) Western Blot (1:5000-1:10000) The optimal working dilution should be determined by the end user.
Storage Buffer	In PBS, 150 mM NaCl, pH 7.4 (50% glycerol, 0.02% sodium azide).
Storage Instruction	Store at -20°C for one year. After reconstitution, at 4°C for one month. It can also be aliquotted and stored frozen at -20°C for a longer time. Avoid repeated freezing and thawing.
Note	This product contains sodium azide: a POISONOUS AND HAZARDOUS SUBSTANCE which should be handled by trained staff only.

Applications

- Western Blot (Cell lysate)

Western Blot analysis of MCF7 cell lysate with TGFBI monoclonal antibody, clone EA-20 (Cat # MAB19997).

- Immunohistochemistry (Formalin/PFA-fixed paraffin-embedded sections)

Immunohistochemical staining (Formalin-fixed paraffin-embedded sections) of human colon cancer with TGFBI monoclonal antibody, clone EA-20 (Cat # MAB19997).

- Immunocytochemistry

- Immunofluorescence

- Immunoprecipitation

- Flow Cytometry

Gene Info — TGFBI

Entrez GeneID [7045](#)

Protein Accession# [Q15582](#)

Gene Name TGFBI

Gene Alias	BIGH3, CDB1, CDG2, CDGG1, CSD, CSD1, CSD2, CSD3, EBMD, LCD1
Gene Description	transforming growth factor, beta-induced, 68kDa
Omim ID	121820 121900 122200 601692 602082 607541 608470 608471
Gene Ontology	Hyperlink
Gene Summary	<p>This gene encodes an RGD-containing protein that binds to type I, II and IV collagens. The RGD motif is found in many extracellular matrix proteins modulating cell adhesion and serves as a ligand recognition sequence for several integrins. This protein plays a role in cell-collagen interactions and may be involved in endochondrial bone formation in cartilage. The protein is induced by transforming growth factor-beta and acts to inhibit cell adhesion. Mutations in this gene are associated with multiple types of corneal dystrophy. [provided by RefSeq]</p>
Other Designations	RGD-containing collagen-associated protein kerato-epithelin

Disease

- [Cardiovascular Diseases](#)
- [Corneal Dystrophies](#)
- [Diabetes Mellitus](#)
- [Edema](#)
- [Genetic Predisposition to Disease](#)