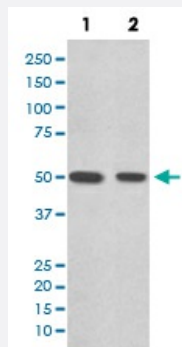


DES monoclonal antibody, clone BDF-4

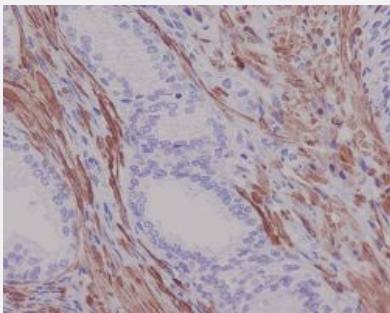
Catalog # MAB19978 Size 100 uL

Applications



Western Blot (Cell lysate)

Western blot analysis of (1) Mouse heart tissue lysate; (2) Rat heart tissue lysate with DES monoclonal antibody.



Immunohistochemistry (Formalin/PFA-fixed paraffin-embedded sections)

Immunohistochemical staining of paraffin-embedded human prostate with DES monoclonal antibody.

Specification

Product Description	Rabbit monoclonal antibody raised against synthetic peptide of human DES.
Immunogen	A synthetic peptide corresponding to human DES.
Host	Rabbit
Reactivity	Human, Mouse, Rat
Form	Liquid
Purification	Affinity purification
Isotype	IgG

Recommend Usage	Flow Cytometry (1:50) Immunocytochemistry (1:50-1:200) Immunofluorescence (1:50-1:200) Immunohistochemistry (1:50-1:200) Western Blot (1:10000-50000) The optimal working dilution should be determined by the end user.
Storage Buffer	In PBS, pH 7.4, 150mM NaCl, 0.02% sodium azide and 50% glycerol.
Storage Instruction	Store at -20°C for one year. After reconstitution, at 4°C for one month. It can also be aliquotted and stored frozen at -20°C for a longer time. Avoid repeated freezing and thawing.
Note	This product contains sodium azide: a POISONOUS AND HAZARDOUS SUBSTANCE which should be handled by trained staff only.

Applications

- Western Blot (Cell lysate)

Western blot analysis of (1) Mouse heart tissue lysate; (2) Rat heart tissue lysate with DES monoclonal antibody.

- Immunohistochemistry (Formalin/PFA-fixed paraffin-embedded sections)

Immunohistochemical staining of paraffin-embedded human prostate with DES monoclonal antibody.

- Immunocytochemistry

- Immunofluorescence

- Flow Cytometry

Gene Info — DES

Entrez GeneID	1674
Protein Accession#	P17661
Gene Name	DES
Gene Alias	CMD1I, CSM1, CSM2, FLJ12025, FLJ39719, FLJ41013, FLJ41793
Gene Description	desmin
Omim ID	125660 601419 604765

Gene Ontology

[Hyperlink](#)

Gene Summary

This gene encodes a muscle-specific class III intermediate filament. Homopolymers of this protein form a stable intracytoplasmic filamentous network connecting myofibrils to each other and to the plasma membrane. Mutations in this gene are associated with desmin-related myopathy, a familial cardiac and skeletal myopathy (CSM), and with distal myopathies. [provided by RefSeq]

Other Designations

OTTHUMP00000064865|intermediate filament protein

Pathway

- [Arrhythmogenic right ventricular cardiomyopathy \(ARVC\)](#)
- [Hypertrophic cardiomyopathy \(HCM\)](#)

Disease

- [Cardiomyopathy](#)
- [Cardiovascular Diseases](#)
- [Diabetes Mellitus](#)
- [Edema](#)