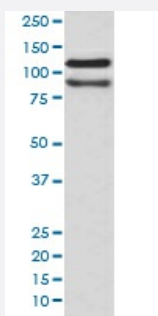


CTNND1 monoclonal antibody, clone GI-3

Catalog # MAB19976 Size 100 uL

Applications



Western Blot (Cell lysate)

Western blot analysis of HeLa cell lysate with CTNND1 monoclonal antibody.

Specification

Product Description Rabbit monoclonal antibody raised against synthetic peptide of human CTNND1.

Immunogen A synthetic peptide corresponding to human CTNND1.

Host Rabbit

Reactivity Human

Form Liquid

Purification Affinity purification

Isotype IgG

Recommend Usage

- Immunocytochemistry (1:50-1:100)
- Immunofluorescence (1:50-1:100)
- Immunohistochemistry (1:50-1:100)
- Immunoprecipitation (1:30)
- The optimal working dilution should be determined by the end user.

Storage Buffer In PBS, pH 7.4, 150mM NaCl, 0.02% sodium azide and 50% glycerol.

Storage Instruction

Store at -20°C for one year. After reconstitution, at 4°C for one month. It can also be aliquotted and stored frozen at -20°C for a longer time. Avoid repeated freezing and thawing.

Note

This product contains sodium azide: a POISONOUS AND HAZARDOUS SUBSTANCE which should be handled by trained staff only.

Applications

- Western Blot (Cell lysate)

Western blot analysis of HeLa cell lysate with CTNND1 monoclonal antibody.

- Immunohistochemistry (Formalin/PFA-fixed paraffin-embedded sections)
- Immunocytochemistry
- Immunofluorescence
- Immunoprecipitation

Gene Info — CTNND1

Entrez GeneID[1500](#)**Protein Accession#**[O60716](#)**Gene Name**

CTNND1

Gene Alias

CAS, CTNND, KIAA0384, P120CAS, P120CTN, p120

Gene Description

catenin (cadherin-associated protein), delta 1

Omim ID[601045](#)**Gene Ontology**[Hyperlink](#)**Gene Summary**

This gene encodes a member of the Armadillo protein family, which function in adhesion between cells and signal transduction. Multiple translation initiation codons and alternative splicing result in many different isoforms being translated. Not all of the full-length natures of the described transcript variants have been determined. [provided by RefSeq]

Other Designations

catenin, delta 1

Pathway

- [Adherens junction](#)
- [Leukocyte transendothelial migration](#)