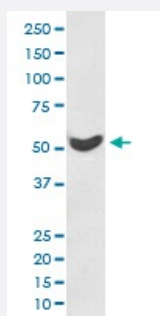


KRT7 monoclonal antibody, clone GEC-11

Catalog # MAB19967 Size 100 uL

Applications



Western Blot (Cell lysate)

Western blot analysis of HeLa cell lysate with KRT7 monoclonal antibody.

Specification

Product Description Rabbit monoclonal antibody raised against synthetic peptide of human KRT7.

Immunogen A synthetic peptide corresponding to human KRT7.

Host Rabbit

Reactivity Human

Form Liquid

Purification Affinity purification

Isotype IgG

Recommend Usage

- Immunocytochemistry (1:50-1:200)
- Immunofluorescence (1:50-1:200)
- Immunohistochemistry (1:100-1:500)
- Western Blot (1:500-1:1000)
- The optimal working dilution should be determined by the end user.

Storage Buffer In PBS, pH 7.4, 150mM NaCl, 0.02% sodium azide and 50% glycerol.

Storage Instruction

Store at -20°C for one year. After reconstitution, at 4°C for one month. It can also be aliquotted and stored frozen at -20°C for a longer time. Avoid repeated freezing and thawing.

Note

This product contains sodium azide: a POISONOUS AND HAZARDOUS SUBSTANCE which should be handled by trained staff only.

Applications

- Western Blot (Cell lysate)

Western blot analysis of HeLa cell lysate with KRT7 monoclonal antibody.

- Immunohistochemistry (Formalin/PFA-fixed paraffin-embedded sections)

- Immunocytochemistry

- Immunofluorescence

Gene Info — KRT7

Entrez GeneID[3855](#)**Protein Accession#**[P08729](#)**Gene Name**

KRT7

Gene Alias

CK7, K2C7, K7, MGC129731, MGC3625, SCL

Gene Description

keratin 7

Omim ID[148059](#)**Gene Ontology**[Hyperlink](#)**Gene Summary**

The protein encoded by this gene is a member of the keratin gene family. The type II cytokeratins consist of basic or neutral proteins which are arranged in pairs of heterotypic keratin chains coexpressed during differentiation of simple and stratified epithelial tissues. This type II cytokeratin is specifically expressed in the simple epithelia lining the cavities of the internal organs and in the gland ducts and blood vessels. The genes encoding the type II cytokeratins are clustered in a region of chromosome 12q12-q13. Alternative splicing may result in several transcript variants; however, not all variants have been fully described. [provided by RefSeq]

Other Designations

cytokeratin 7|keratin, 55K type II cytoskeletal|keratin, simple epithelial type I, K7|keratin, type II cytoskeletal 7|sarcolectin|type II mesothelial keratin K7