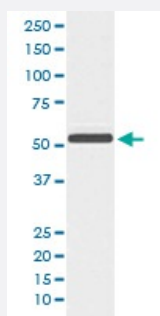


KRT6A monoclonal antibody, clone GAO-11

Catalog # MAB19965 Size 100 uL

Applications



Western Blot (Cell lysate)

Western blot analysis of A431 cell lysate with KRT6A monoclonal antibody.

Specification

Product Description Rabbit monoclonal antibody raised against synthetic peptide of human KRT6A.

Immunogen A synthetic peptide corresponding to human KRT6A.

Host Rabbit

Reactivity Human

Form Liquid

Purification Affinity purification

Isotype IgG

Recommend Usage

- Immunocytochemistry (1:50-1:200)
- Immunofluorescence (1:50-1:200)
- Immunohistochemistry (1:50-1:200)
- Western Blot (1:500-1:2000)
- The optimal working dilution should be determined by the end user.

Storage Buffer In PBS, pH 7.4, 150mM NaCl, 0.02% sodium azide and 50% glycerol.

Storage Instruction

Store at -20°C for one year. After reconstitution, at 4°C for one month. It can also be aliquotted and stored frozen at -20°C for a longer time. Avoid repeated freezing and thawing.

Note

This product contains sodium azide: a POISONOUS AND HAZARDOUS SUBSTANCE which should be handled by trained staff only.

Applications

- Western Blot (Cell lysate)

Western blot analysis of A431 cell lysate with KRT6A monoclonal antibody.

- Immunohistochemistry (Formalin/PFA-fixed paraffin-embedded sections)

- Immunocytochemistry

- Immunofluorescence

Gene Info — KRT6A

Entrez GeneID[3853](#)**Protein Accession#**[P02538](#)**Gene Name**

KRT6A

Gene Alias

CK6A, CK6C, CK6D, K6A, K6C, K6D, KRT6C, KRT6D

Gene Description

keratin 6A

Omim ID[148041](#) [167200](#)**Gene Ontology**[Hyperlink](#)**Gene Summary**

The protein encoded by this gene is a member of the keratin gene family. The type II cytokeratins consist of basic or neutral proteins which are arranged in pairs of heterotypic keratin chains coexpressed during differentiation of simple and stratified epithelial tissues. As many as six of this type II cytokeratin (KRT6) have been identified; the multiplicity of the genes is attributed to successive gene duplication events. The genes are expressed with family members KRT16 and/or KRT17 in the filiform papillae of the tongue, the stratified epithelial lining of oral mucosa and esophagus, the outer root sheath of hair follicles, and the glandular epithelia. This KRT6 gene in particular encodes the most abundant isoform. Mutations in these genes have been associated with pachyonychia congenita. The type II cytokeratins are clustered in a region of chromosome 12q12-q13. [provided by RefSeq]

Other Designations

56 cytoskeletal type II keratin|K6D keratin|cytokeratin 6A|cytokeratin 6C|cytokeratin 6D|keratin 6C|keratin, epidermal type II, K6A|keratin, epidermal type II, K6C|keratin, type II cytoskeletal 6D|type II keratin isoform K6c
