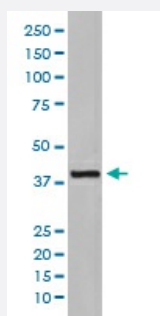


# KRT19 monoclonal antibody, clone CCO-11

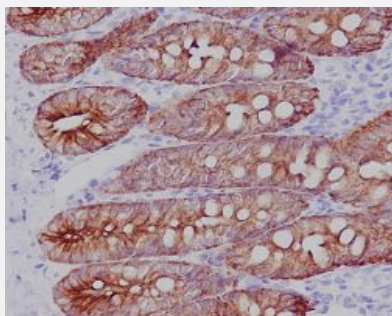
Catalog # MAB19958      Size 100 uL

## Applications



### Western Blot (Cell lysate)

Western blot analysis of HepG2 cell lysate with KRT19 monoclonal antibody.



### Immunohistochemistry (Formalin/PFA-fixed paraffin-embedded sections)

Immunohistochemical staining of paraffin-embedded rat colon with KRT19 monoclonal antibody.

## Specification

<b>Product Description</b>	Rabbit monoclonal antibody raised against synthetic peptide of human KRT19.
<b>Immunogen</b>	A synthetic peptide corresponding to human KRT19.
<b>Host</b>	Rabbit
<b>Reactivity</b>	Human, Rat
<b>Form</b>	Liquid
<b>Purification</b>	Affinity purification
<b>Isotype</b>	IgG

<b>Recommend Usage</b>	Flow Cytometry (1:50) Immunocytochemistry (1:50-1:200) Immunofluorescence (1:50-1:200) Immunohistochemistry (1:50-1:200) Western Blot (1:5000-1:10000) The optimal working dilution should be determined by the end user.
<b>Storage Buffer</b>	In PBS, pH 7.4, 150mM NaCl, 0.02% sodium azide and 50% glycerol.
<b>Storage Instruction</b>	Store at -20°C for one year. After reconstitution, at 4°C for one month. It can also be aliquotted and stored frozen at -20°C for a longer time. Avoid repeated freezing and thawing.
<b>Note</b>	This product contains sodium azide: a POISONOUS AND HAZARDOUS SUBSTANCE which should be handled by trained staff only.

## Applications

- Western Blot (Cell lysate)

Western blot analysis of HepG2 cell lysate with KRT19 monoclonal antibody.

- Immunohistochemistry (Formalin/PFA-fixed paraffin-embedded sections)

Immunohistochemical staining of paraffin-embedded rat colon with KRT19 monoclonal antibody.

- Immunocytochemistry

- Immunofluorescence

- Flow Cytometry

## Gene Info — KRT19

<b>Entrez GeneID</b>	<a href="#">3880</a>
<b>Protein Accession#</b>	<a href="#">P08727</a>
<b>Gene Name</b>	KRT19
<b>Gene Alias</b>	CK19, K19, K1CS, MGC15366
<b>Gene Description</b>	keratin 19
<b>Omim ID</b>	<a href="#">148020</a>
<b>Gene Ontology</b>	<a href="#">Hyperlink</a>

**Gene Summary**

The protein encoded by this gene is a member of the keratin family. The keratins are intermediate filament proteins responsible for the structural integrity of epithelial cells and are subdivided into cytokeratins and hair keratins. The type I cytokeratins consist of acidic proteins which are arranged in pairs of heterotypic keratin chains. Unlike its related family members, this smallest known acidic cytokeratin is not paired with a basic cytokeratin in epithelial cells. It is specifically expressed in the periderm, the transiently superficial layer that envelopes the developing epidermis. The type I cytokeratins are clustered in a region of chromosome 17q12-q21. [provided by RefSeq]

**Other Designations**

40-kDa keratin intermediate filament|cytokeratin 19|keratin, type I cytoskeletal 19|keratin, type I, 40-kd

**Disease**

- [Liver Cirrhosis](#)