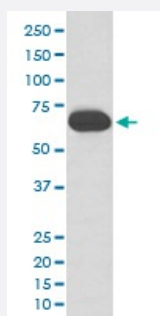


# KRT1 monoclonal antibody, clone GBH-11

Catalog # MAB19947      Size 100 uL

## Applications



### Western Blot (Cell lysate)

Western blot analysis of human skin lysate with KRT1 monoclonal antibody.

## Specification

|                            |   |
|----------------------------|---|
| <b>Product Description</b> | Rabbit monoclonal antibody raised against synthetic peptide of human KRT1.  |
| <b>Immunogen</b>           | A synthetic peptide corresponding to human KRT1.  |
| <b>Host</b>                | Rabbit  |
| <b>Reactivity</b>          | Human   |
| <b>Form</b>                | Liquid  |
| <b>Purification</b>        | Affinity purification   |
| <b>Isotype</b>             | IgG   |
| <b>Recommend Usage</b>     | Immunohistochemistry (1:50-1:200)<br>Western Blot (1:5000-1:20000)<br>The optimal working dilution should be determined by the end user.  |
| <b>Storage Buffer</b>      | In PBS, pH 7.4, 150mM NaCl, 0.02% sodium azide and 50% glycerol.  |
| <b>Storage Instruction</b> | Store at -20°C for one year. After reconstitution, at 4°C for one month. It can also be aliquotted and stored frozen at -20°C for a longer time. Avoid repeated freezing and thawing. |

## Note

This product contains sodium azide: a POISONOUS AND HAZARDOUS SUBSTANCE which should be handled by trained staff only.

## Applications

- Western Blot (Cell lysate)

Western blot analysis of human skin lysate with KRT1 monoclonal antibody.

- Immunohistochemistry (Formalin/PFA-fixed paraffin-embedded sections)

## Gene Info — KRT1

Entrez GeneID [3848](#)

Protein Accession# [P04264](#)

Gene Name KRT1

Gene Alias CK1, EHK1, K1, KRT1A

Gene Description keratin 1

Omim ID [113800](#) [139350](#) [146590](#) [148700](#) [600962](#) [607602](#) [607654](#)

Gene Ontology [Hyperlink](#)

**Gene Summary** The protein encoded by this gene is a member of the keratin gene family. The type II cytokeratins consist of basic or neutral proteins which are arranged in pairs of heterotypic keratin chains coexpressed during differentiation of simple and stratified epithelial tissues. This type II cytokeratin is specifically expressed in the spinous and granular layers of the epidermis with family member KRT 10 and mutations in these genes have been associated with bullous congenital ichthyosiform erythroderma. The type II cytokeratins are clustered in a region of chromosome 12q12-q13. [provided by RefSeq]

**Other Designations** cytokeratin 1|epidermolytic hyperkeratosis 1|hair alpha protein|keratin, type II cytoskeletal 1