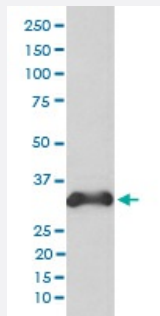


CCND3 monoclonal antibody, clone GID-3

Catalog # MAB19935 Size 100 uL

Applications



Western Blot (Cell lysate)

Western blot analysis of K562 cell lysate with CCND3 monoclonal antibody.

Specification

Product Description Rabbit monoclonal antibody raised against synthetic peptide of human CCND3.

Immunogen A synthetic peptide corresponding to human CCND3.

Host Rabbit

Reactivity Human

Form Liquid

Purification Affinity purification

Isotype IgG

Recommend Usage
 Flow Cytometry (1:30)
 Immunocytochemistry (1:50-1:200)
 Immunofluorescence (1:50-1:200)
 Western Blot (1:1000-1:2000)
 The optimal working dilution should be determined by the end user.

Storage Buffer In PBS, pH 7.4, 150mM NaCl, 0.02% sodium azide and 50% glycerol.

Storage Instruction

Store at -20°C for one year. After reconstitution, at 4°C for one month. It can also be aliquotted and stored frozen at -20°C for a longer time. Avoid repeated freezing and thawing.

Note

This product contains sodium azide: a POISONOUS AND HAZARDOUS SUBSTANCE which should be handled by trained staff only.

Applications

- Western Blot (Cell lysate)

Western blot analysis of K562 cell lysate with CCND3 monoclonal antibody.

- Immunocytochemistry

- Immunofluorescence

- Flow Cytometry

Gene Info — CCND3

Entrez GeneID[896](#)**Protein Accession#**[P30281](#)**Gene Name**

CCND3

Gene Alias

-

Gene Description

cyclin D3

Omim ID[123834](#)**Gene Ontology**[Hyperlink](#)**Gene Summary**

The protein encoded by this gene belongs to the highly conserved cyclin family, whose members are characterized by a dramatic periodicity in protein abundance through the cell cycle. Cyclins function as regulators of CDK kinases. Different cyclins exhibit distinct expression and degradation patterns which contribute to the temporal coordination of each mitotic event. This cyclin forms a complex with and functions as a regulatory subunit of CDK4 or CDK6, whose activity is required for cell cycle G1/S transition. This protein has been shown to interact with and be involved in the phosphorylation of tumor suppressor protein Rb. The CDK4 activity associated with this cyclin was reported to be necessary for cell cycle progression through G2 phase into mitosis after UV radiation. Several transcript variants encoding different isoforms have been found for this gene. [provided by RefSeq]

Other Designations

D3-type cyclin|G1/S-specific cyclin D3|OTTHUMP00000016390

Pathway

- [Cell cycle](#)
- [Focal adhesion](#)
- [Jak-STAT signaling pathway](#)
- [p53 signaling pathway](#)
- [Wnt signaling pathway](#)

Disease

- [Adenocarcinoma](#)
- [Alzheimer disease](#)
- [Breast cancer](#)
- [Breast Neoplasms](#)
- [Cerebral Amyloid Angiopathy](#)
- [Esophageal Neoplasms](#)
- [Genetic Predisposition to Disease](#)
- [Kidney Failure](#)
- [Lung Neoplasms](#)
- [Neoplasm Invasiveness](#)
- [Neuroblastoma](#)
- [Ovarian cancer](#)
- [Ovarian Neoplasms](#)
- [Pulmonary Disease](#)
- [Urinary Bladder Neoplasms](#)
- [Werner syndrome](#)