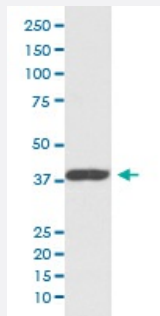


CXCR7 monoclonal antibody, clone FEI-1

Catalog # MAB19927 Size 100 uL

Applications



Western Blot (Cell lysate)

Western blot analysis of K562 cell lysate with CXCR7 monoclonal antibody.

Specification

Product Description	Rabbit monoclonal antibody raised against synthetic peptide of human CXCR7.
Immunogen	A synthetic peptide corresponding to human CXCR7.
Host	Rabbit
Reactivity	Human
Form	Liquid
Purification	Affinity purification
Isotype	IgG
Recommend Usage	Flow Cytometry (1:50) Western Blot (1:500-1:2000) The optimal working dilution should be determined by the end user.
Storage Buffer	In PBS, pH 7.4, 150mM NaCl, 0.02% sodium azide and 50% glycerol.
Storage Instruction	Store at -20°C for one year. After reconstitution, at 4°C for one month. It can also be aliquotted and stored frozen at -20°C for a longer time. Avoid repeated freezing and thawing.

Note

This product contains sodium azide: a POISONOUS AND HAZARDOUS SUBSTANCE which should be handled by trained staff only.

Applications

- Western Blot (Cell lysate)

Western blot analysis of K562 cell lysate with CXCR7 monoclonal antibody.

- Flow Cytometry

Gene Info — CXCR7

Entrez GeneID	57007
---------------	-----------------------

Protein Accession#	P25106
--------------------	------------------------

Gene Name	CXCR7
-----------	-------

Gene Alias	CMKOR1, GPR159, RDC1
------------	----------------------

Gene Description	chemokine (C-X-C motif) receptor 7
------------------	------------------------------------

Omim ID	610376
---------	------------------------

Gene Ontology	Hyperlink
---------------	---------------------------

Gene Summary	This gene encodes a member of the G-protein coupled receptor family. Although this protein was earlier thought to be a receptor for vasoactive intestinal peptide (VIP), it is now considered to be an orphan receptor, in that its endogenous ligand has not been identified. The protein is also a co receptor for human immunodeficiency viruses (HIV). Translocations involving this gene and HMG A2 on chromosome 12 have been observed in lipomas. [provided by RefSeq]
--------------	---

Other Designations	G protein-coupled receptor chemokine orphan receptor 1
--------------------	--

Disease

- [HIV Infections](#)