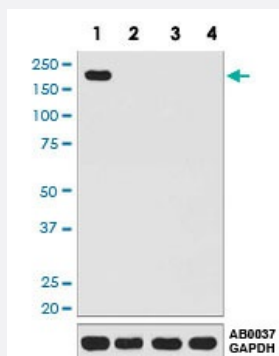


CRISPR-Cas9 SP monoclonal antibody, clone ABCI-3

Catalog # MAB19921 Size 100 uL

Applications



Western Blot (Cell lysate)

Western blot analysis of (1) 293T cell lysate transfected with CRISPR-Cas9; (2) 293T cell lysate; (3) 3T3 cell lysate; (4) PC12 cell lysate with CRISPR-Cas9 SP monoclonal antibody.

Specification

Product Description	Rabbit monoclonal antibody raised against synthetic peptide of Streptococcus pyogenes CRISPR-Cas9 SP.
Immunogen	A synthetic peptide corresponding to Streptococcus pyogenes CRISPR-Cas9 SP.
Host	Rabbit
Reactivity	Streptococcus pyogenes
Form	Liquid
Purification	Affinity purification
Isotype	IgG
Recommend Usage	Flow Cytometry (1:60) Immunocytochemistry (1:50-1:200) Immunofluorescence (1:50-1:200) Immunohistochemistry (1:50-1:200) Western Blot (1:1000-1:5000) The optimal working dilution should be determined by the end user.

Storage Buffer	In PBS, pH 7.4, 150mM NaCl, 0.02% sodium azide and 50% glycerol.
Storage Instruction	Store at -20°C for one year. After reconstitution, at 4°C for one month. It can also be aliquotted and stored frozen at -20°C for a longer time. Avoid repeated freezing and thawing.
Note	This product contains sodium azide: a POISONOUS AND HAZARDOUS SUBSTANCE which should be handled by trained staff only.

Applications

- Western Blot (Cell lysate)

Western blot analysis of (1) 293T cell lysate transfected with CRISPR-Cas9; (2) 293T cell lysate; (3) 3T3 cell lysate; (4) PC12 cell lysate with CRISPR-Cas9 SP monoclonal antibody.

- Immunohistochemistry (Formalin/PFA-fixed paraffin-embedded sections)

- Immunocytochemistry

- Immunofluorescence

- Flow Cytometry