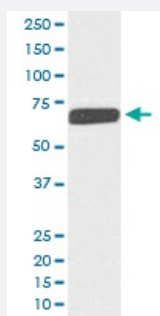


COL10A1 monoclonal antibody, clone AOAH-3

Catalog # MAB19912 Size 100 uL

Applications



Western Blot (Cell lysate)

Western blot analysis of human fetal skin lysate with COL10A1 monoclonal antibody.

Specification

Product Description	Rabbit monoclonal antibody raised against synthetic peptide of human COL10A1.
Immunogen	A synthetic peptide corresponding to human COL10A1.
Host	Rabbit
Reactivity	Human
Form	Liquid
Purification	Affinity purification
Isotype	IgG
Recommend Usage	Western Blot (1:500-1:2000) The optimal working dilution should be determined by the end user.
Storage Buffer	In PBS, pH 7.4, 150mM NaCl, 0.02% sodium azide and 50% glycerol.
Storage Instruction	Store at -20°C for one year. After reconstitution, at 4°C for one month. It can also be aliquotted and stored frozen at -20°C for a longer time. Avoid repeated freezing and thawing.

Note This product contains sodium azide: a POISONOUS AND HAZARDOUS SUBSTANCE which should be handled by trained staff only.

Applications

- Western Blot (Cell lysate)

Western blot analysis of human fetal skin lysate with COL10A1 monoclonal antibody.

Gene Info — COL10A1

Entrez GeneID	1300
Protein Accession#	Q03692
Gene Name	COL10A1
Gene Alias	-
Gene Description	collagen, type X, alpha 1
Omim ID	120110
Gene Ontology	Hyperlink
Gene Summary	This gene encodes the alpha chain of type X collagen, a short chain collagen expressed by hypertrophic chondrocytes during endochondral ossification. Unlike type VIII collagen, the other short chain collagen, type X collagen is a homotrimer. Mutations in this gene are associated with Schmid type metaphyseal chondrodysplasia (SMCD) and Japanese type spondylometaphyseal dysplasia (SMD). [provided by RefSeq]
Other Designations	OTTHUMP00000017049 OTTHUMP00000040411 Schmid metaphyseal chondrodysplasia collagen X, alpha-1 polypeptide type X collagen alpha 1

Disease

- [Genetic Predisposition to Disease](#)
- [Intervertebral Disk Displacement](#)