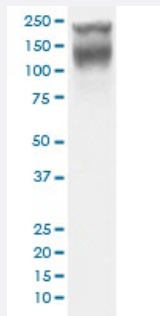


CEACAM5 monoclonal antibody, clone AAOA-3

Catalog # MAB19886 Size 100 uL

Applications



Western Blot (Cell lysate)

Western blot analysis of human colon cancer lysate with CEACAM5 monoclonal antibody.

Specification

Product Description Rabbit monoclonal antibody raised against synthetic peptide of human CEACAM5.

Immunogen A synthetic peptide corresponding to human CEACAM5.

Host Rabbit

Reactivity Human

Form Liquid

Purification Affinity purification

Isotype IgG

Recommend Usage
 Immunocytochemistry (1:50-1:200)
 Immunofluorescence (1:50-1:200)
 Immunohistochemistry (1:50-1:200)
 Western Blot (1:500-1:2000)
 The optimal working dilution should be determined by the end user.

Storage Buffer In PBS, pH 7.4, 150mM NaCl, 0.02% sodium azide and 50% glycerol.

Storage Instruction

Store at -20°C for one year. After reconstitution, at 4°C for one month. It can also be aliquotted and stored frozen at -20°C for a longer time. Avoid repeated freezing and thawing.

Note

This product contains sodium azide: a POISONOUS AND HAZARDOUS SUBSTANCE which should be handled by trained staff only.

Applications

- Western Blot (Cell lysate)

Western blot analysis of human colon cancer lysate with CEACAM5 monoclonal antibody.

- Immunohistochemistry (Formalin/PFA-fixed paraffin-embedded sections)

- Immunocytochemistry

- Immunofluorescence

Gene Info — CEACAM5

Entrez GeneID[1048](#)**Protein Accession#**[P06731](#)**Gene Name**

CEACAM5

Gene Alias

CD66e, CEA, DKFZp781M2392

Gene Description

carcinoembryonic antigen-related cell adhesion molecule 5

Omim ID[114890](#)**Gene Ontology**[Hyperlink](#)**Other Designations**

-