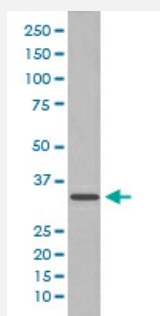


CDC2 monoclonal antibody, clone BOI-3

Catalog # MAB19875 Size 100 uL

Applications



Western Blot (Cell lysate)

Western blot analysis of HeLa cell lysate with CDC2 monoclonal antibody.

Specification

Product Description	Rabbit monoclonal antibody raised against synthetic peptide of human CDC2.
Immunogen	A synthetic peptide corresponding to human CDC2.
Host	Rabbit
Reactivity	Human
Form	Liquid
Purification	Affinity purification
Isotype	IgG
Recommend Usage	Western Blot (1:500-1:2000) The optimal working dilution should be determined by the end user.
Storage Buffer	In PBS, pH 7.4, 150mM NaCl, 0.02% sodium azide and 50% glycerol.
Storage Instruction	Store at -20°C for one year. After reconstitution, at 4°C for one month. It can also be aliquotted and stored frozen at -20°C for a longer time. Avoid repeated freezing and thawing.

Note

This product contains sodium azide: a POISONOUS AND HAZARDOUS SUBSTANCE which should be handled by trained staff only.

Applications

- Western Blot (Cell lysate)

Western blot analysis of HeLa cell lysate with CDC2 monoclonal antibody.

Gene Info — CDC2

Entrez GeneID [983](#)

Protein Accession# [P06493](#)

Gene Name CDC2

Gene Alias CDC28A, CDK1, DKFZp686L20222, MGC111195

Gene Description cell division cycle 2, G1 to S and G2 to M

Omim ID [116940](#)

Gene Ontology [Hyperlink](#)

Gene Summary The protein encoded by this gene is a member of the Ser/Thr protein kinase family. This protein is a catalytic subunit of the highly conserved protein kinase complex known as M-phase promoting factor (MPF), which is essential for G1/S and G2/M phase transitions of eukaryotic cell cycle. Mitotic cyclins stably associate with this protein and function as regulatory subunits. The kinase activity of this protein is controlled by cyclin accumulation and destruction through the cell cycle. The phosphorylation and dephosphorylation of this protein also play important regulatory roles in cell cycle control. Alternatively spliced transcript variants encoding different isoforms have been found for this gene. [provided by RefSeq]

Other Designations OTTHUMP00000019660|cell cycle controller CDC2|cell division control protein 2 homolog|cell division cycle 2 protein|cyclin-dependent kinase 1|p34 protein kinase

Pathway

- [Cell cycle](#)
- [Gap junction](#)
- [p53 signaling pathway](#)

Disease

- [Alzheimer disease](#)
- [Breast cancer](#)
- [Breast Neoplasms](#)
- [Dementia](#)
- [Genetic Predisposition to Disease](#)
- [Lung Neoplasms](#)
- [Pulmonary Disease](#)