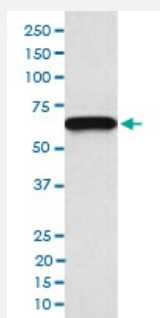


# CDC25B monoclonal antibody, clone HIH-3

Catalog # MAB19860      Size 100 uL

## Applications



### Western Blot (Cell lysate)

Western blot analysis of U937 cell lysate with CDC25B monoclonal antibody.

## Specification

<b>Product Description</b>	Rabbit monoclonal antibody raised against synthetic peptide of human CDC25B.
<b>Immunogen</b>	A synthetic peptide corresponding to human CDC25B.
<b>Host</b>	Rabbit
<b>Reactivity</b>	Human
<b>Form</b>	Liquid
<b>Purification</b>	Affinity purification
<b>Isotype</b>	IgG
<b>Recommend Usage</b>	Immunoprecipitation (1:50) The optimal working dilution should be determined by the end user.
<b>Storage Buffer</b>	In PBS, pH 7.4, 150mM NaCl, 0.02% sodium azide and 50% glycerol.
<b>Storage Instruction</b>	Store at -20°C for one year. After reconstitution, at 4°C for one month. It can also be aliquotted and stored frozen at -20°C for a longer time. Avoid repeated freezing and thawing.

**Note**

This product contains sodium azide: a POISONOUS AND HAZARDOUS SUBSTANCE which should be handled by trained staff only.

## Applications

- Western Blot (Cell lysate)

Western blot analysis of U937 cell lysate with CDC25B monoclonal antibody.

- Immunoprecipitation

## Gene Info — CDC25B

Entrez GeneID	<a href="#">994</a>
---------------	---------------------

Protein Accession#	<a href="#">P30305</a>
--------------------	------------------------

Gene Name	CDC25B
-----------	--------

Gene Alias	-
------------	---

Gene Description	cell division cycle 25 homolog B (S. pombe)
------------------	---

Omim ID	<a href="#">116949</a>
---------	------------------------

Gene Ontology	<a href="#">Hyperlink</a>
---------------	---------------------------

Gene Summary	CDC25B is a member of the CDC25 family of phosphatases. CDC25B activates the cyclin dependent kinase CDC2 by removing two phosphate groups and it is required for entry into mitosis. CDC25B shuttles between the nucleus and the cytoplasm due to nuclear localization and nuclear export signals. The protein is nuclear in the M and G1 phases of the cell cycle and moves to the cytoplasm during S and G2. CDC25B has oncogenic properties, although its role in tumor formation has not been determined. Multiple transcript variants for this gene exist. [provided by RefSeq]
--------------	---

Other Designations	OTTHUMP00000030137 OTTHUMP00000030138 OTTHUMP00000030139 cell division cycle 25B
--------------------	--

## Pathway

- [Cell cycle](#)

- [MAPK signaling pathway](#)

## Disease

- [Bipolar Disorder](#)
- [Genetic Predisposition to Disease](#)
- [Lung Neoplasms](#)
- [Ovarian Neoplasms](#)
- [Pulmonary Disease](#)
- [Urinary Bladder Neoplasms](#)
- [Werner syndrome](#)