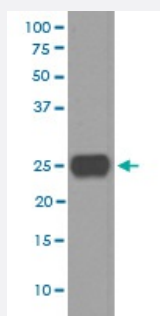


THY1 monoclonal antibody, clone CEB-20

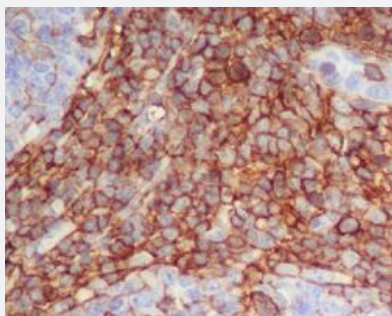
Catalog # MAB19856 Size 100 uL

Applications



Western Blot (Cell lysate)

Western blot analysis of human fetal brain lysate with THY1 monoclonal antibody.



Immunohistochemistry (Formalin/PFA-fixed paraffin-embedded sections)

Immunohistochemical staining of paraffin-embedded human tonsil with THY1 monoclonal antibody.

Specification

Product Description	Rabbit monoclonal antibody raised against synthetic peptide of human THY1.
Immunogen	A synthetic peptide corresponding to human THY1.
Host	Rabbit
Reactivity	Human
Form	Liquid
Purification	Affinity purification
Isotype	IgG

Recommend Usage	Immunohistochemistry (1:50-1:200) Western Blot (1:500-1:2000) The optimal working dilution should be determined by the end user.
Storage Buffer	In PBS, pH 7.4, 150mM NaCl, 0.02% sodium azide and 50% glycerol.
Storage Instruction	Store at -20°C for one year. After reconstitution, at 4°C for one month. It can also be aliquotted and stored frozen at -20°C for a longer time. Avoid repeated freezing and thawing.
Note	This product contains sodium azide: a POISONOUS AND HAZARDOUS SUBSTANCE which should be handled by trained staff only.

Applications

- Western Blot (Cell lysate)

Western blot analysis of human fetal brain lysate with THY1 monoclonal antibody.

- Immunohistochemistry (Formalin/PFA-fixed paraffin-embedded sections)

Immunohistochemical staining of paraffin-embedded human tonsil with THY1 monoclonal antibody.

Gene Info — THY1

Entrez GeneID	7070
Protein Accession#	P04216
Gene Name	THY1
Gene Alias	CD90, FLJ33325
Gene Description	Thy-1 cell surface antigen
Omim ID	188230
Gene Ontology	Hyperlink
Other Designations	Thy-1 T-cell antigen Thy-1 membrane glycoprotein

Pathway

- [Leukocyte transendothelial migration](#)

Disease

- [Celiac Disease](#)
- [Genetic Predisposition to Disease](#)