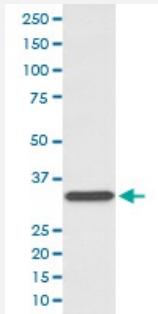


# CD74 monoclonal antibody, clone AOIF-3

Catalog # MAB19849      Size 100 uL

## Applications



### Western Blot (Cell lysate)

Western blot analysis of Ramos cell lysate with CD74 monoclonal antibody.

## Specification

**Product Description** Rabbit monoclonal antibody raised against synthetic peptide of human CD74.

**Immunogen** A synthetic peptide corresponding to human CD74.

**Host** Rabbit

**Reactivity** Human

**Form** Liquid

**Purification** Affinity purification

**Isotype** IgG

**Recommend Usage**

- Flow Cytometry (1:50)
- Immunocytochemistry (1:50-1:200)
- Immunofluorescence (1:50-1:200)
- Immunohistochemistry (1:50-1:200)
- Western Blot (1:500-1:2000)
- The optimal working dilution should be determined by the end user.

**Storage Buffer** In PBS, pH 7.4, 150mM NaCl, 0.02% sodium azide and 50% glycerol.

**Storage Instruction**

Store at -20°C for one year. After reconstitution, at 4°C for one month. It can also be aliquotted and stored frozen at -20°C for a longer time. Avoid repeated freezing and thawing.

**Note**

This product contains sodium azide: a POISONOUS AND HAZARDOUS SUBSTANCE which should be handled by trained staff only.

## Applications

- Western Blot (Cell lysate)

Western blot analysis of Ramos cell lysate with CD74 monoclonal antibody.

- Immunohistochemistry (Formalin/PFA-fixed paraffin-embedded sections)

- Immunocytochemistry

- Immunofluorescence

- Flow Cytometry

## Gene Info — CD74

**Entrez GeneID**[972](#)**Protein Accession#**[P04233](#)**Gene Name**

CD74

**Gene Alias**

DHLA, HLADG, Ia-GAMMA

**Gene Description**

CD74 molecule, major histocompatibility complex, class II invariant chain

**Omim ID**[142790](#)**Gene Ontology**[Hyperlink](#)**Gene Summary**

major histocompatibility complex

**Other Designations**

CD74 antigen|CD74 antigen (invariant polypeptide of major histocompatibility complex, class II antigen-associated)|HLA-DR-gamma|Ia-associated invariant chain|MHC HLA-DR gamma chain|gamma chain of class II antigens

## Pathway

- [Antigen processing and presentation](#)

## Disease

- [Cardiovascular Diseases](#)
- [Celiac Disease](#)
- [Diabetes Mellitus](#)
- [Edema](#)