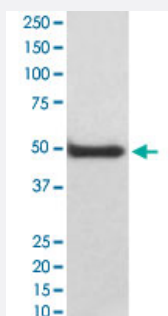


CAMK2D monoclonal antibody, clone ABBF-3

Catalog # MAB19692 Size 100 uL

Applications



Western Blot (Cell lysate)

Western Blot analysis of A431 cell lysate with CAMK2D monoclonal antibody, clone ABBF-3 (Cat # MAB19692).

Specification

Product Description Rabbit monoclonal antibody raised against synthetic peptide of human CAMK2D.

Immunogen A synthetic peptide corresponding to human CAMK2D.

Host Rabbit

Theoretical MW (kDa) 56.369

Reactivity Human

Form Liquid

Purification Affinity purification

Isotype IgG

Recommend Usage
Immunohistochemistry (1:50-1:200)
Western Blot (1:500-1:2000)
The optimal working dilution should be determined by the end user.

Storage Buffer In PBS, 150 mM NaCl, pH 7.4 (50% glycerol, 0.02% sodium azide).

Storage Instruction

Store at -20°C for one year. After reconstitution, at 4°C for one month. It can also be aliquotted and stored frozen at -20°C for a longer time. Avoid repeated freezing and thawing.

Note

This product contains sodium azide: a POISONOUS AND HAZARDOUS SUBSTANCE which should be handled by trained staff only.

Applications

- Western Blot (Cell lysate)

Western Blot analysis of A431 cell lysate with CAMK2D monoclonal antibody, clone ABBF-3 (Cat # MAB19692).

- Immunohistochemistry

Gene Info — CAMK2D

Entrez GeneID[817](#)**Protein Accession#**[Q13557](#)**Gene Name**

CAMK2D

Gene Alias

CAMKD, DKFZp686G23119, DKFZp686I2288, MGC44911

Gene Description

calcium/calmodulin-dependent protein kinase II delta

Omim ID[607708](#)**Gene Ontology**[Hyperlink](#)**Gene Summary**

The product of this gene belongs to the serine/threonine protein kinase family and to the Ca(2+)/calmodulin-dependent protein kinase subfamily. Calcium signaling is crucial for several aspects of plasticity at glutamatergic synapses. In mammalian cells, the enzyme is composed of four different chains: alpha, beta, gamma, and delta. The product of this gene is a delta chain. Alternative splicing results in multiple transcript variants encoding distinct isoforms. Distinct isoforms of this chain have different expression patterns

Other Designations

CaM kinase II delta subunit|CaM-kinase II delta chain|CaMK-II delta subunit|OTTHUMP00000163829|OTTHUMP00000163830|calcium/calmodulin-dependent protein kinase (CaM kinase) II delta|calcium/calmodulin-dependent protein kinase type II delta chain

Pathway

- [Calcium signaling pathway](#)

- [ErbB signaling pathway](#)
- [Glioma](#)
- [GnRH signaling pathway](#)
- [Long-term potentiation](#)
- [Melanogenesis](#)
- [Neurotrophin signaling pathway](#)
- [Olfactory transduction](#)
- [Wnt signaling pathway](#)

Disease

- [Alcoholism](#)
- [Genetic Predisposition to Disease](#)
- [Mucocutaneous Lymph Node Syndrome](#)
- [Tobacco Use Disorder](#)