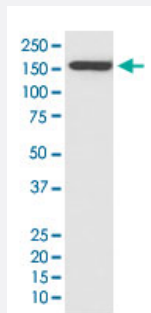


CR2 monoclonal antibody, clone FHB-3

Catalog # MAB19672 Size 100 uL

Applications



Western Blot (Cell lysate)

Western Blot (Cell lysate) analysis of Raji cell lysate.

Specification

Product Description	Rabbit monoclonal antibody raised against synthetic peptide of human CR2.
Immunogen	A synthetic peptide corresponding to human CR2.
Host	Rabbit
Reactivity	Human, Mouse
Form	Liquid
Purification	Affinity purification
Isotype	IgG
Recommend Usage	Flow Cytometry (1:50) Immunoprecipitation (1:50) Immunocytochemistry (1:50-200) Immunofluorescence (1:50-200) Immunohistochemistry (Formalin/PFA-fixed paraffin-embedded sections) (1:50-200) Western Blot (1:1000-5000) The optimal working dilution should be determined by the end user.
Storage Buffer	In PBS, 150 mM NaCl, pH 7.4 (50% glycerol, 0.02% sodium azide).

Storage Instruction

Store at -20°C for one year. After reconstitution, at 4°C for one month. It can also be aliquotted and stored frozen at -20°C for a longer time. Avoid repeated freezing and thawing.

Note

This product contains sodium azide: a POISONOUS AND HAZARDOUS SUBSTANCE which should be handled by trained staff only.

Applications

- Western Blot (Cell lysate)

Western Blot (Cell lysate) analysis of Raji cell lysate.

- Immunohistochemistry (Formalin/PFA-fixed paraffin-embedded sections)

- Immunocytochemistry

- Immunofluorescence

- Immunoprecipitation

- Flow Cytometry

Gene Info — CR2

Entrez GeneID[1380](#)**Protein Accession#**[P20023](#)**Gene Name**

CR2

Gene Alias

C3DR, CD21, SLEB9

Gene Description

complement component (3d/Epstein Barr virus) receptor 2

Omim ID[120650 610927](#)**Gene Ontology**[Hyperlink](#)**Gene Summary**

Complement component receptor-2 (CR2) is the membrane protein on B lymphocytes to which the Epstein-Barr virus (EBV) binds during infection of these cells. See also CR1 (MIM 120620). Yefenof et al. (1976) [PubMed 181330] found complete overlapping of EBV receptors and C3 (MIM 120700) receptors on human B lymphocytes.[supplied by OMIM]

Other Designations

OTTHUMP00000034421|OTTHUMP00000034447

Pathway

- [B cell receptor signaling pathway](#)
- [Complement and coagulation cascades](#)
- [Hematopoietic cell lineage](#)

Disease

- [Genetic Predisposition to Disease](#)
- [Lupus Erythematosus](#)
- [Lymphoma](#)
- [Macular Degeneration](#)
- [Nasopharyngeal Neoplasms](#)
- [Parkinson disease](#)