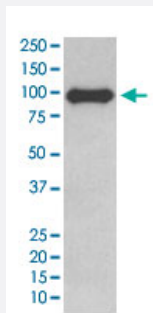


CD19 monoclonal antibody, clone AOFO-3

Catalog # MAB19670

Size 100 uL

Applications



Western Blot (Cell lysate)

Western Blot (Cell lysate) analysis of Ramos cell lysate.

Specification

Product Description	Rabbit monoclonal antibody raised against synthetic peptide of human CD19.
Immunogen	A synthetic peptide corresponding to human CD19.
Host	Rabbit
Reactivity	Human
Form	Liquid
Purification	Affinity purification
Isotype	IgG
Recommend Usage	Immunocytochemistry (1:50-200) Immunofluorescence (1:50-200) Immunohistochemistry (Formalin/PFA-fixed paraffin-embedded sections) (1:50-200) Western Blot (1:500-2000) The optimal working dilution should be determined by the end user.
Storage Buffer	In PBS, 150 mM NaCl, pH 7.4 (50% glycerol, 0.02% sodium azide).

Storage Instruction

Store at -20°C for one year. After reconstitution, at 4°C for one month. It can also be aliquotted and stored frozen at -20°C for a longer time. Avoid repeated freezing and thawing.

Note

This product contains sodium azide: a POISONOUS AND HAZARDOUS SUBSTANCE which should be handled by trained staff only.

Applications

- Western Blot (Cell lysate)

Western Blot (Cell lysate) analysis of Ramos cell lysate.

- Immunohistochemistry (Formalin/PFA-fixed paraffin-embedded sections)

- Immunocytochemistry

- Immunofluorescence

Gene Info — CD19

Entrez GeneID[930](#)**Protein Accession#**[P15391](#)**Gene Name**

CD19

Gene Alias

B4, MGC12802

Gene Description

CD19 molecule

Omim ID[107265](#)**Gene Ontology**[Hyperlink](#)**Gene Summary**

Lymphocytes proliferate and differentiate in response to various concentrations of different antigens. The ability of the B cell to respond in a specific, yet sensitive manner to the various antigens is achieved with the use of low-affinity antigen receptors. This gene encodes a cell surface molecule which assembles with the antigen receptor of B lymphocytes in order to decrease the threshold for antigen receptor-dependent stimulation. [provided by RefSeq]

Other Designations

B-lymphocyte antigen CD19|CD19 antigen

Pathway

- [B cell receptor signaling pathway](#)
- [Hematopoietic cell lineage](#)
- [Primary immunodeficiency](#)

Disease

- [Arthritis](#)
- [Crohn Disease](#)
- [Genetic Predisposition to Disease](#)
- [Lupus Erythematosus](#)
- [Pemphigus](#)
- [Scleroderma](#)