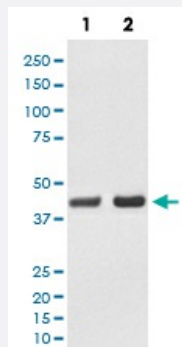


BMI1 monoclonal antibody, clone IHE-2

Catalog # MAB19624 Size 100 uL

Applications



Western Blot (Cell lysate)

Western blot analysis of (1) K562 cell lysate; (2) PC-12 cell lysate with BMI1 monoclonal antibody.

Specification

Product Description Rabbit monoclonal antibody raised against synthetic peptide of human BMI1.

Immunogen A synthetic peptide corresponding to human BMI1.

Host Rabbit

Reactivity Human, Rat

Form Liquid

Purification Affinity purification

Isotype IgG

Recommend Usage

- Immunocytochemistry (1:50-1:200)
- Immunofluorescence (1:50-1:200)
- Immunohistochemistry (1:50-1:200)
- Western Blot (1:500-1:2000)
- The optimal working dilution should be determined by the end user.

Storage Buffer In PBS, pH 7.4, 150mM NaCl, 0.02% sodium azide and 50% glycerol.

Storage Instruction

Store at -20°C for one year. After reconstitution, at 4°C for one month. It can also be aliquotted and stored frozen at -20°C for a longer time. Avoid repeated freezing and thawing.

Note

This product contains sodium azide: a POISONOUS AND HAZARDOUS SUBSTANCE which should be handled by trained staff only.

Applications

- Western Blot (Cell lysate)

Western blot analysis of (1) K562 cell lysate; (2) PC-12 cell lysate with BMI1 monoclonal antibody.

- Immunohistochemistry (Formalin/PFA-fixed paraffin-embedded sections)

- Immunocytochemistry

- Immunofluorescence

Gene Info — BMI1

Entrez GeneID[648](#)**Protein Accession#**[P35226](#)**Gene Name**

BMI1

Gene Alias

MGC12685, PCGF4, RNF51

Gene Description

BMI1 polycomb ring finger oncogene

Omim ID[164831](#)**Gene Ontology**[Hyperlink](#)**Other Designations**

B lymphoma Mo-MLV insertion region 1 homolog|fivi-2/bmi-1|murine leukemia viral (bmi-1) oncogene homolog|oncogene BMI-1|polycomb group ring finger 4