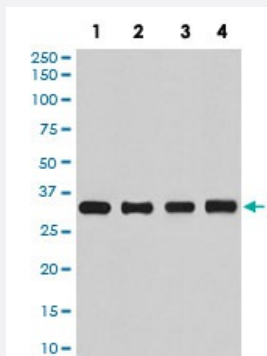


ACTB monoclonal antibody, clone BF-1

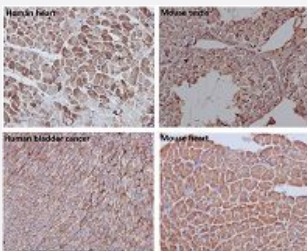
Catalog # MAB19613 Size 100 uL

Applications



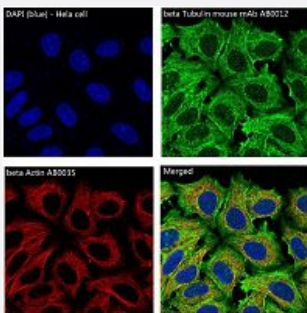
Western Blot (Cell lysate)

Western blot analysis of (1)HeLa cell lysate; (2)Human fetal kidney lysate; (3) NIH/3T3 cell lysate; (4) PC-12 cell lysate with ACTB monoclonal antibody.



Immunohistochemistry (Formalin/PFA-fixed paraffin-embedded sections)

Immunohistochemical staining of paraffin-embedded (1) Human heart; (2) Mouse testis; (3) Human bladder cancer; (4) Mouse heart with ACTB monoclonal antibody.



Immunofluorescence

Immunofluorescent analysis of HeLa cells with ACTB monoclonal antibody.

Specification

Product Description

Rabbit monoclonal antibody raised against synthetic peptide of human ACTB.

Immunogen	A synthetic peptide corresponding to human ACTB.
Host	Rabbit
Reactivity	Human, Mouse, Rat
Form	Liquid
Purification	Affinity purification
Isotype	IgG
Recommend Usage	Immunocytochemistry (1:50-1:200) Immunofluorescence (1:50-1:200) Immunohistochemistry (1:50-1:200) Western Blot (1:3000-1:10000) The optimal working dilution should be determined by the end user.
Storage Buffer	In PBS, pH 7.4, 150mM NaCl, 0.02% sodium azide and 50% glycerol.
Storage Instruction	Store at -20°C for one year. After reconstitution, at 4°C for one month. It can also be aliquotted and stored frozen at -20°C for a longer time. Avoid repeated freezing and thawing.
Note	This product contains sodium azide: a POISONOUS AND HAZARDOUS SUBSTANCE which should be handled by trained staff only.

Applications

- Western Blot (Cell lysate)

Western blot analysis of (1)HeLa cell lysate; (2)Human fetal kidney lysate; (3) NIH/3T3 cell lysate; (4) PC-12 cell lysate with ACTB monoclonal antibody.

- Immunohistochemistry (Formalin/PFA-fixed paraffin-embedded sections)

Immunohistochemical staining of paraffin-embedded (1) Human heart; (2) Mouse testis; (3) Human bladder cancer; (4) Mouse heart with ACTB monoclonal antibody.

- Immunocytochemistry

- Immunofluorescence

Immunofluorescent analysis of Hela cells with ACTB monoclonal antibody.

Gene Info — ACTB

Entrez GeneID

[60](#)

Protein Accession#	P60709
Gene Name	ACTB
Gene Alias	PS1TP5BP1
Gene Description	actin, beta
Omim ID	102630
Gene Ontology	Hyperlink
Gene Summary	This gene encodes one of six different actin proteins. Actins are highly conserved proteins that are involved in cell motility, structure, and integrity. This actin is a major constituent of the contractile apparatus and one of the two nonmuscle cytoskeletal actins. [provided by RefSeq]
Other Designations	PS1TP5-binding protein 1 actin, cytoplasmic 1 beta actin beta cytoskeletal actin

Pathway

- [Adherens junction](#)
- [Arrhythmogenic right ventricular cardiomyopathy \(ARVC\)](#)
- [Focal adhesion](#)
- [Hypertrophic cardiomyopathy \(HCM\)](#)
- [Leukocyte transendothelial migration](#)
- [Pathogenic Escherichia coli infection - EHEC](#)
- [Regulation of actin cytoskeleton](#)
- [Tight junction](#)
- [Vibrio cholerae infection](#)

Disease

- [Breast cancer](#)
- [Breast Neoplasms](#)