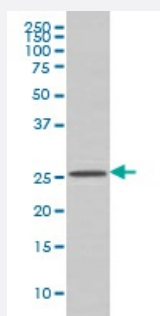


BCL2A1 monoclonal antibody, clone EEE-2

Catalog # MAB19608 Size 100 uL

Applications



Western Blot (Cell lysate)

Western blot analysis of Raji cell lysate with BCL2A1 monoclonal antibody.

Specification

Product Description	Rabbit monoclonal antibody raised against synthetic peptide of human BCL2A1.
Immunogen	A synthetic peptide corresponding to human BCL2A1.
Host	Rabbit
Reactivity	Human, Mouse, Rat
Form	Liquid
Purification	Affinity purification
Isotype	IgG
Recommend Usage	Immunohistochemistry (1:50-1:200) Flow Cytometry (1:100) Western Blot (1:500-1:2000) The optimal working dilution should be determined by the end user.
Storage Buffer	In PBS, pH 7.4, 150mM NaCl, 0.02% sodium azide and 50% glycerol.
Storage Instruction	Store at -20°C for one year. After reconstitution, at 4°C for one month. It can also be aliquotted and stored frozen at -20°C for a longer time. Avoid repeated freezing and thawing.

Note

This product contains sodium azide: a POISONOUS AND HAZARDOUS SUBSTANCE which should be handled by trained staff only.

Applications

- Western Blot (Cell lysate)

Western blot analysis of Raji cell lysate with BCL2A1 monoclonal antibody.

- Immunohistochemistry (Formalin/PFA-fixed paraffin-embedded sections)

- Flow Cytometry

Gene Info — BCL2A1

Entrez GeneID	597
---------------	---------------------

Protein Accession#	Q16548
--------------------	------------------------

Gene Name	BCL2A1
-----------	--------

Gene Alias	ACC-1, ACC-2, BCL2L5, BFL1, GRS, HBPA1
------------	--

Gene Description	BCL2-related protein A1
------------------	-------------------------

Omim ID	601056
---------	------------------------

Gene Ontology	Hyperlink
---------------	---------------------------

Gene Summary

This gene encodes a member of the BCL-2 protein family. The proteins of this family form hetero- or homodimers and act as anti- and pro-apoptotic regulators that are involved in a wide variety of cellular activities such as embryonic development, homeostasis and tumorigenesis. The protein encoded by this gene is able to reduce the release of pro-apoptotic cytochrome c from mitochondria and block caspase activation. This gene is a direct transcription target of NF-kappa B in response to inflammatory mediators, and is up-regulated by different extracellular signals, such as granulocyte-macrophage colony-stimulating factor (GM-CSF), CD40, phorbol ester and inflammatory cytokine TNF and IL-1, which suggests a cytoprotective function that is essential for lymphocyte activation as well as cell survival. Alternatively spliced transcript variants encoding different isoforms have been found for this gene. [provided by RefSeq]

Other Designations	hematopoietic BCL2-related protein A1
--------------------	---------------------------------------

Pathway

- [Metabolic pathways](#)

Disease

- [Cardiovascular Diseases](#)
- [Dermatitis](#)
- [Diabetes Mellitus](#)
- [Edema](#)
- [Genetic Predisposition to Disease](#)
- [Graft vs Host Disease](#)
- [Hematologic Diseases](#)
- [Hodgkin Disease](#)
- [Kidney Failure](#)
- [Lymphoma](#)
- [Lymphoproliferative Disorders](#)
- [Occupational Diseases](#)
- [Waldenstrom Macroglobulinemia](#)
- [Werner syndrome](#)