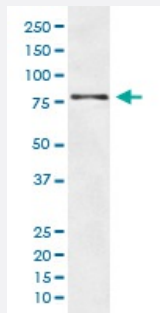


ATG7 monoclonal antibody, clone FCA-1

Catalog # MAB19592 Size 100 uL

Applications



Western Blot (Cell lysate)

Western blot analysis of HepG2 cell lysate with ATG7 monoclonal antibody.

Specification

Product Description Rabbit monoclonal antibody raised against synthetic peptide of human ATG7.

Immunogen A synthetic peptide corresponding to human ATG7.

Host Rabbit

Reactivity Human

Form Liquid

Purification Affinity purification

Isotype IgG

Recommend Usage

- Immunocytochemistry (1:50-1:200)
- Immunofluorescence (1:50-1:200)
- Immunohistochemistry (1:50-1:200)
- Immunoprecipitation (1:20)
- Flow Cytometry (1:20)
- Western Blot (1:10000-1:50000)
- The optimal working dilution should be determined by the end user.

Storage Buffer In PBS, pH 7.4, 150mM NaCl, 0.02% sodium azide and 50% glycerol.

Storage Instruction

Store at -20°C for one year. After reconstitution, at 4°C for one month. It can also be aliquotted and stored frozen at -20°C for a longer time. Avoid repeated freezing and thawing.

Note

This product contains sodium azide: a POISONOUS AND HAZARDOUS SUBSTANCE which should be handled by trained staff only.

Applications

- Western Blot (Cell lysate)

Western blot analysis of HepG2 cell lysate with ATG7 monoclonal antibody.

- Immunohistochemistry (Formalin/PFA-fixed paraffin-embedded sections)

- Immunocytochemistry

- Immunofluorescence

- Immunoprecipitation

- Flow Cytometry

Gene Info — ATG7

Entrez GeneID[10533](#)**Protein Accession#**[O95352](#)**Gene Name**

ATG7

Gene Alias

APG7-LIKE, APG7L, DKFZp434N0735, GSA7

Gene Description

ATG7 autophagy related 7 homolog (S. cerevisiae)

Omim ID[608760](#)**Gene Ontology**[Hyperlink](#)**Gene Summary**

This gene was identified based on homology to Pichia pastoris GSA7 and Saccharomyces cerevisiae APG7. In the yeast, the protein appears to be required for fusion of peroxisomal and vacuolar membranes. The protein shows homology to the ATP-binding and catalytic sites of the E1 ubiquitin activating enzymes. [provided by RefSeq]

Other Designations

APG7 autophagy 7-like|ubiquitin activating enzyme E1-like protein

Pathway

- [Regulation of autophagy](#)

Disease

- [Disease Progression](#)
- [Disease Susceptibility](#)
- [HIV Infections](#)
- [Huntington Disease](#)
- [Tobacco Use Disorder](#)